



上海乐天电梯部件有限公司

制造地址：浙江省嘉兴市海盐县西塘桥街道
海湾大道19号

电话：+86-21-6769 0698

邮箱：info@shliftech.com

网址：http://www.shliftech.com

Shanghai Liftech Elevator Accessories Co.,Ltd.

Manufacturing Address: No.19, Haiwan Highway, Xitangqiao Haiyan
Jiaxing, Zhejiang, China

Tel: +86-21-6769 0698

E-mail: info@shliftech.com

http://www.shliftech.com

电梯安全部件白皮书 White Paper of Elevator Safety Components

2026.05





上海乐天电梯部件有限公司成立于2004年,专注于电梯安全部件的研发、制造、测试与销售。历经二十余年的稳健发展,公司在技术积淀与市场服务能力方面持续提升,现已成为中国电梯安全部件领域的核心供应商之一。凭借严苛的品质管控体系与精益求精的专业服务能力,我们长期为国内外多家主流电梯品牌及工程客户提供稳定、可靠的产品与解决方案,并持续在更广阔的工业领域开拓创新、续写发展新篇章。

企业使命: 让电梯更安全

战略目标: 成为全球前三的安全部件制造商

实现战略目标的关键路径: 坚持持续的技术进步

Founded in 2004, Shanghai Liftech Elevator Accessories Co., Ltd. specializes in the R&D, manufacturing, testing, and sales of elevator safety components. After more than 20 years of steady development, the company has continuously grown in technological accumulation and market service capabilities, and has become one of the core suppliers of elevator safety components in China. With strict quality control and professional services, we have long provided stable and reliable products and solutions to many leading elevator brands and engineering customers at home and abroad. We will continue to explore and innovate in a broader industrial field and write a new chapter of development.

Our Mission: Making Elevators Safer

Strategic Goal: To become one of the world's top three manufacturers of safety component

Key Path to Strategic Goal: Sustainable technological progress



1-5 技术参数表 Technical Parameters

1 渐进式安全钳技术参数表 Technical Parameters of Progressive Safety Gear	1 瞬时式安全钳技术参数表 Technical Parameters of Instantaneous Safety Gear
2 安全钳联动机构技术参数表 Technical Parameters of Linkage Types	3 限速器技术参数表 Technical Parameters of Overspeed Governor
4 张紧装置技术参数表 Technical Parameters of Tension Device	5 缓冲器技术参数表 Technical Parameters of Oil Buffer
5 夹绳器技术参数表 Technical Parameters of Rope Brake	

6-23 渐进式安全钳 Progressive Safety Gear

LSG01	7-8	LSG03	9-10	LSG06 LSG06B LSG06A	11-12 13-14 15	LSG08	16	LSG10	17
LSG17	18-19	LSG18	20	LSG20	21	LSG22 LSG22A	22 23	LSE07	30

24-30 瞬时式安全钳 Instantaneous Safety Gear

LSG02	25	LSG05	26	LSG16 LSG16A	27	LSE02	28	LSE03	29
-------	----	-------	----	-----------------	----	-------	----	-------	----

31-47 安全钳联动机构样式 Linkage Types

LLD01	32	LSD01	33	LSD02	34	LSD03	35	LSD05	36
LSD06	37	LSD07	38	LSD08	39	LSD09	40	LSD10	41
LSD11	42	LSD12	43	LSD13	44	LSD15	45	LSD16	46
LSD17	47								

48-65 限速器 Overspeed Governor

LOG01	49	LOG02	50	LOG03 LOG03B	51-52 53-54	LOG06	55	LOG07	56
LOG09	57-58	LOG11	59	LOG15	60	LOG16 LOG16B	61 62	LOG20	63
LOG21	64	LUC03	65						

66-86 张紧装置 Tension Device

LTD01	67-69	LTD02	70-75	LTD03	76-77	LTD05	78-79	LTD06	80-81
LTD07	82-84	LTD08	85-86						

87-89 缓冲器 Oil Buffer

LHB-D Series	88	LHB-E Series	89
--------------	----	--------------	----

90-92 夹绳器 Rope Brake

LRB02	91	UCMP	92
-------	----	------	----

渐进式安全钳技术参数表

Technical Parameters of Progressive Safety Gear

型号 Type	额定速度 Rated Speed (m/s)	触发速度 Tripping Speed (m/s)	允许质量 Permitted P+Q(kg)	导轨宽度 Rail Width (mm)	导轨润滑 Rail Lubrication	认证 Certifications
LSG01	≤2.5	0.29~3.22	800~3600	9/10/15.88/16	油/干 Oil or Dry	GB/CE/EAC
LSG03	≤2.5	0.29~3.22	1000~6500	9/10/15.88/16	油/干 Oil or Dry	GB/CE
LSG06	≤3.0	0.29~3.83	800~3300	9/10/15.88/16	油/干 Oil or Dry	GB/CE
LSG06A	≤3.0	0.29~3.83	2000~5500	15.88/16/19	油/干 Oil or Dry	GB/CE
LSG06B	≤1.75	0.29~2.33	800~2600	9/10	油/干 Oil or Dry	GB/CE
LSG08	≤1.0	0.29~1.50	560~1500	9/10	油/干 Oil or Dry	GB
LSG10	≤4.0	0.29~5.06	650~7000	9/10/15.88/16/19	油/干 Oil or Dry	GB/CE
LSG17	≤2.0	0.29~2.62	5000~30000	15.88/16/19/28.6	油/干 Oil or Dry	GB
LSG18	≤1.5	0.29~2.04	6500~12500	16/19/28.6	油/干 Oil or Dry	GB
LSG20	≤4.0	0.29~5.06	2800~7600	15.88/16/19	干 Dry	/
LSG22	≤4.0	0.29~5.06	2000~7450	16/19	油/干 Oil or Dry	GB
LSG22A	≤5.0	0.29~6.3	3000~7350	16/19	干 Dry	GB

瞬时式安全钳技术参数表

Technical Parameters of Instantaneous Safety Gear

型号 Type	额定速度 Rated Speed (m/s)	触发速度 Tripping Speed (m/s)	允许质量 Permitted P+Q(kg)	导轨宽度 Rail Width (mm)	认证 Certifications
LSG02	≤0.63	0.29~0.8	≤1500	9/10/15.88/16	GB
LSG05	≤0.63	0.29~0.8	≤13000	16	GB
LSG16	≤0.63	0.29~0.8	≤58000	31.75	GB
LSG16A	≤0.63	0.29~0.8	≤75000	31.75	GB

电触发安全钳技术参数表

Technical Parameters of Electric Tripping Safety Gear

型号 Type	额定速度 Rated Speed (m/s)	触发速度 Tripping Speed (m/s)	允许质量 Permitted P+Q(kg)	导轨宽度 Rail Width (mm)	认证 Certifications
LSE02	≤0.4	0.29~0.63	≤1500	9/10	/
LSE03	≤0.4	0.29~0.63	≤1300	9/10	/
LSE07	≤1.0	0.29~1.50	≤1800	10/16	/

安全钳联动机构技术参数表

Technical Parameters of Linkage Types

型号 Type	配套安全钳型号 Type of Safety Gear	最大静态提拉力 Max. Static Tensile Force (N)	导轨润滑 Rail Lubrication	认证 Certifications
LLD01	不含 Without	2000	/	/
LSD01	LSG01	2000	油/干 Oil or Dry	GB/CE/EAC
LSD02	LSG03	2000	油/干 Oil or Dry	GB/CE
LSD03	LSG06	1500	油/干 Oil or Dry	GB/CE
LSD05	LSG02	1500	油/干 Oil or Dry	GB
LSD06	LSG02	1500	油/干 Oil or Dry	GB
LSD07	LSG06	1500	油/干 Oil or Dry	GB/CE
	LSG06B	1500	油/干 Oil or Dry	GB/CE
LSD08	LSG10	1500	油/干 Oil or Dry	GB/CE
LSD09	LSG10	1500	油/干 Oil or Dry	GB/CE
LSD10	LSG10	1500	油/干 Oil or Dry	GB/CE
LSD11	LSG02	1500	油/干 Oil or Dry	GB
LSD12	LSG03	2000	油/干 Oil or Dry	GB/CE
LSD13	LSG05	2000	油/干 Oil or Dry	GB
LSD15	LSG17	2000	油/干 Oil or Dry	GB
LSD16	LSG17	2000	油/干 Oil or Dry	GB
LSD17	LSG17	2000	油/干 Oil or Dry	GB

限速器技术参数表

Technical Parameters of Overspeed Governor

型号 Type	绳轮直径 Sheave Diameter (mm)	钢丝绳直径 Rope Diameter (mm)	额定速度 Rated Speed (m/s)	绳张紧力 Rope Tension Force F (N)	提拉力 Tensile Force (N)	有/无机房 MR/MRL	认证 Certifications
LOG01	200	6	≤1.0 1.5/1.6/1.75	280~550	500~1800	MR/MRL	GB/CE/EAC
	250	8	1.0/1.5/1.6 1.75/2.0	280~550	500~1800	MR/MRL	GB/CE/EAC
	315	8	2.0/2.5	280~550	500~1800	MR/MRL	GB/CE
LOG02	240	8	≤1.0 1.5/1.6/1.75	280~350	800~1500	MR	GB
LOG03	200	6	≤1.0 1.5/1.6/1.75	125~280 175~300	800~1500	MR	GB/CE/EAC
	240	8/6	1.0/1.5/1.6 1.75/2.0/2.5/3.0	125~280 175~300	800~1500	MR	GB/CE/EAC
LOG03B	200	6	≤1.0 1.5/1.6/1.75	125~280 175~300	800~1500	MR/MRL	GB/CE/EAC
	240	8/6	1.0/1.5/1.6 1.75/2.0/2.5/3.0	125~280 175~300	800~1500	MR/MRL	GB/CE/EAC
LOG06	150	6	≤1.0	150-250	500~1000	MR/MRL	/
LOG07	150	6	≤1.0	150-250	500~1000	MR/MRL	/
LOG09	200	6/6.5	1.0	250-300	500~1000	MR/MRL	GB/CE
LOG11	200	6	1.0/1.5/ 1.6/1.75	250-300	500~1000	MR	GB
LOG15	241	8	2.0/2.5/3.0	175-230	500~1000	MR/MRL	GB
LOG16	200	6	≤1.75	125-280	800~1500	MR	GB
	240	8	≤2.5				
LOG16B	200	6	≤1.75	125-280	800~1500	MR/MRL	GB
	240	8	≤2.5				
LOG20	320	8	1.0/1.5/1.6 1.75/2.0/2.5 3.0/3.5/4.0 5.0/6.0	245-950	800~2500	MR	GB/CE
LOG21	320	10	5.0/6.0/7.0 8.0/9.0/10.0	735-2011	1100~2600	MR	GB/CE
LUC03	250	8	≤1.0/1.5/ 1.6/1.75	280~350	800~1500	MR	GB

张紧装置技术参数表

Technical Parameters of Tension Device

型号 Type	结构形式 Structural Style	绳轮直径 Pulley Diameter (mm)	钢丝绳直径 Rope Diameter (mm)	重锤材质 Block Materials	绳张紧力 Rope Tension Force (N)
LTD01	摆臂式 Horizontal Hang	200	6	复合 CM 钢板 SP	175/225/280
		240	8	复合 CM 钢板 SP	175/225/280
		250	8	复合 CM 钢板 SP	280
		300	8	复合 CM 钢板 SP	280
LTD02	摆臂式 Horizontal Hang	200	6	复合 CM 钢板 SP	175/225/300
		240	8	复合 CM 钢板 SP	175/225/300
		250	8	复合 CM 钢板 SP	300
LTD03	垂直式 Vertical Hang	200	6	钢板 SP	175
		250	8	钢板 SP	225
		300	8	钢板 SP	280
LTD05	垂直式 Vertical Hang	240	8	钢板 SP	300
		320	8	复合 CM 钢板 SP	245/370/490 610/860/950
LTD06	垂直式 Vertical Hang	200	6	复合 CM 钢板 SP	150
		240	8	复合 CM 钢板 SP	250
LTD07	弹簧张紧 Spring Tension Device	150	6	/	150~220
		200	6	/	290~500 150~220
		240	8	/	163~500 150~220
LTD08	垂直式 Vertical Hang	320	10	钢板 SP	915/1215/1505/ 1810/2100

缓冲器技术参数表

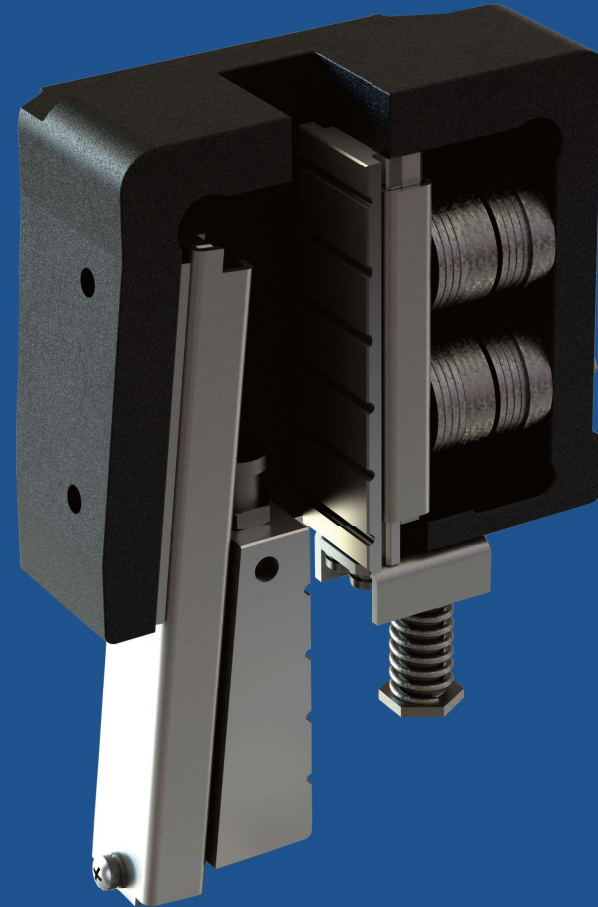
Technical Parameters of Oil Buffer

型号 Type	行程 Stroke (mm)	额定速度 Rated Speed (m/s)	撞击速度 Impact Speed (m/s)	总允许质量 Permitted Load (kg)	自由高度 Free Height (mm)	认证 Certifications
LHB100D	80	≤1.0	≤1.15	600~3000	300	GB
LHB150D	160	≤1.5	≤1.72	600~3000	500	GB
LHB160D	175	≤1.6	≤1.84	600~3000	536	GB
LHB175D	210	≤1.75	≤2.01	600~3000	600	GB
LHB200D	275	≤2.0	≤2.30	600~3000	780	GB
LHB250D	425	≤2.5	≤2.88	600~3000	1125	GB
LHB100E	80	≤1.0	≤1.15	600~4600	300	GB
LHB150E	160	≤1.5	≤1.72	600~4600	500	GB
LHB160E	175	≤1.6	≤1.84	600~4600	536	GB
LHB175E	210	≤1.75	≤2.01	600~4600	600	GB
LHB200E	275	≤2.0	≤2.30	600~4600	780	GB
LHB250E	425	≤2.5	≤2.88	600~4600	1125	GB

夹绳器技术参数表

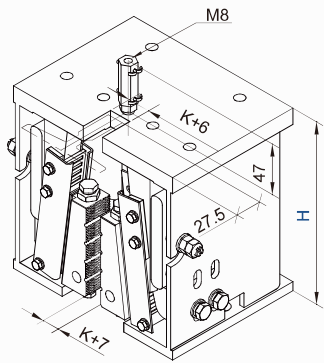
Technical Parameters of Rope Brake

型号 Type	宽度 Width	安装方式 Installation Type	曳引比 Suspension Ratio	额定载重 Rated load (kg)	系统质量 System mass (kg)
LRB02	标准宽 Standard	正装/倒装 Normal or Overhead	2:1	600~3200	1600-11260
	加宽 Extra Width	正装/倒装 Normal or Overhead	2:1	1260~6500	3354-16520
	特宽 Max. Width	正装/倒装 Normal or Overhead	2:1	1260~6500	3354-16520

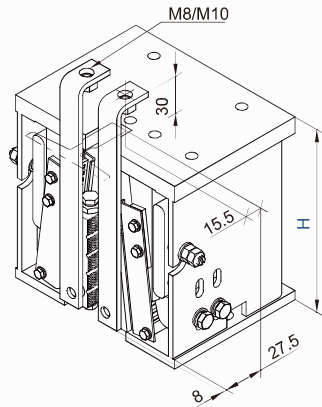



 渐进式安全钳
 Progressive Safety Gear

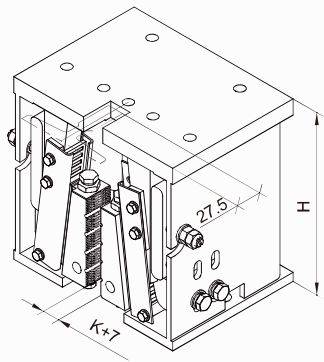
LSG03



P01 单提拉 (M8)
Lift by one Rod (M8)

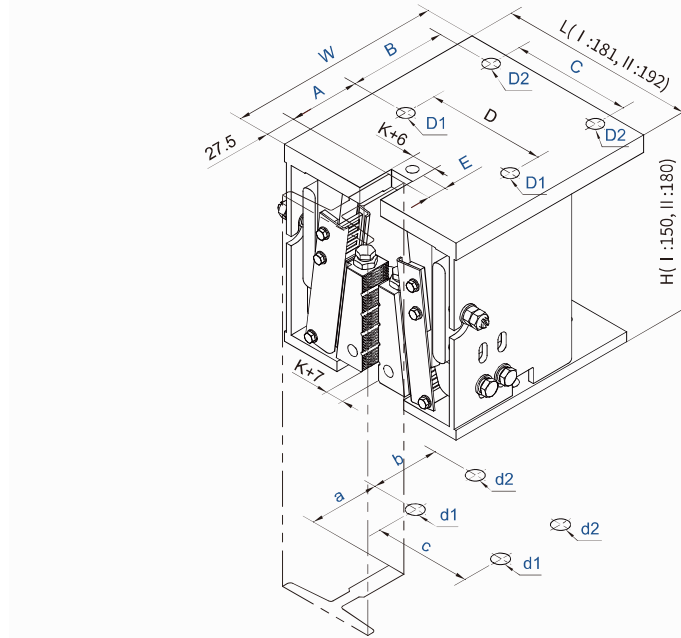


P02 双提拉 (M8)
Lift by two Plates (M8)



P03 双提拉 (M10)
Lift by two Plates (M10)

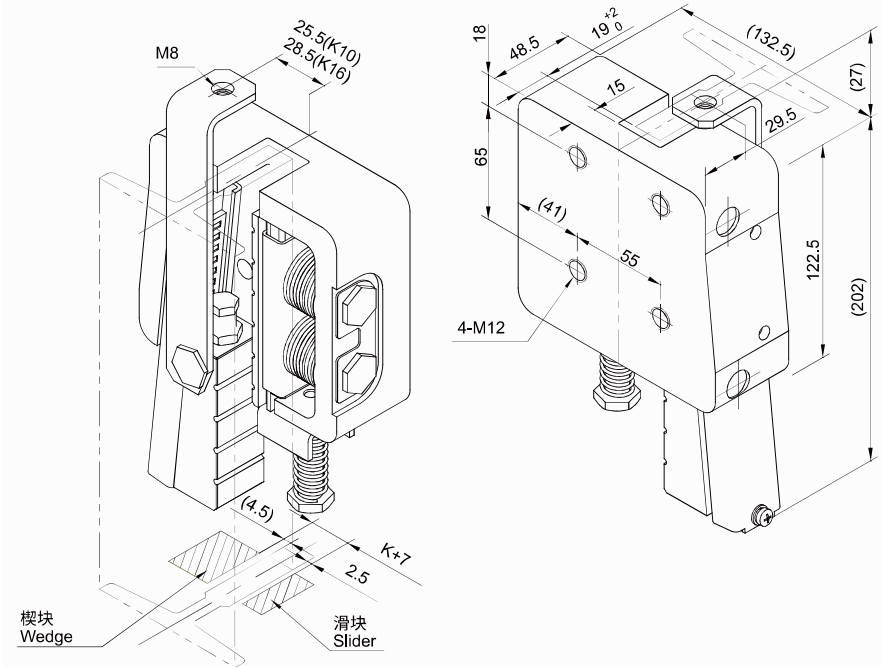
P04 安全钳本体
Safety Gear Body



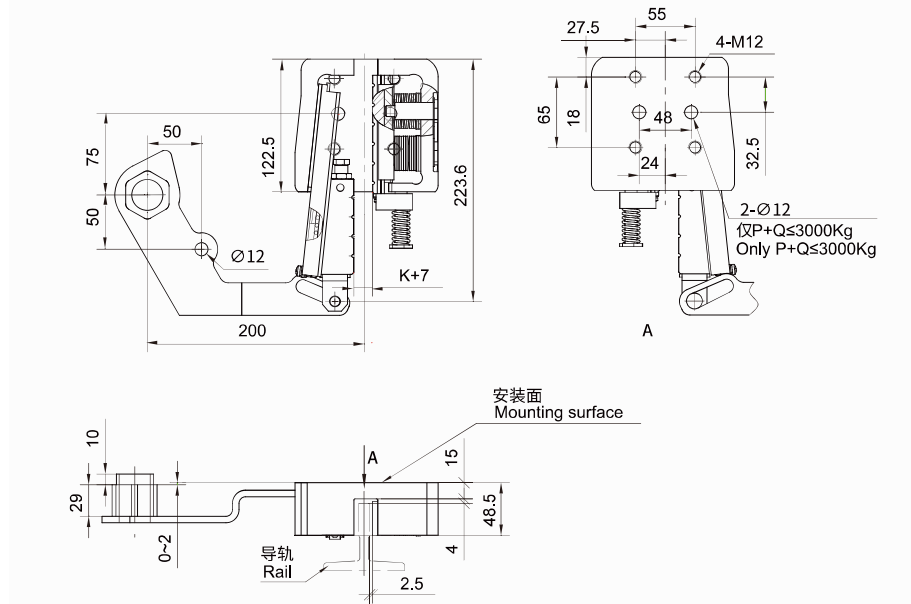
序号 No.	梁接口 Frame Interface								导靴接口 Guide Shoes Interface					提拉方式 Lift Types
	A	B	C	D	E	W	D1	D2	a	b	c	d1	d2	
B01	7.5	125	90	90	12.5	188	2-M12	2-φ19	65.5	64	90	2-φ15	2-15×17	P01-04
B02	7.5	125	90	90	12.5	188	2-M12	2-φ19	45	/	150	2-M16	/	P01-04
B03	12	125	90	90	17	188	2-M12	2-φ19	70	64	90	2-φ15	2-15×17	P01-04
B04	12.5	77	100	140	12.5	137	2-M12	2-M12	39.5	50	100	2-M12	2-M12	P01-04
B05	12.5	77	100	140	12.5	137	2-M12	2-M12	45	/	150	2-M16	/	P01-04
B06	12.5	77	100	140	12.5	137	2-M12	2-M12	64.5	/	90	2-φ14	/	P01-04
B07	65	90	110	110	17	198	2-M16	2-M16	65.5	64	90	2-φ15	2-15×17	P01-04
B08	65	90	110	110	17	198	2-M16	2-M16	45	/	150	2-M16	/	P01-04
B09	65	90	110	110	17	198	2-M16	2-M16	39.5	50	100	2-M12	2-M12	P01-04
B10	65	90	110	110	17	198	2-M16	2-M16	60	/	90	2-M16	/	P01-04
B11	65	90	110	110	17	198	2-M16	2-M16	45	100	150	2-M16	2-M16	P01-04

序号 No.	额定速度 Rated Speed (m/s)	触发速度 Tripping Speed (m/s)	导轨宽度 Rail Width (mm)	允许质量 Permitted P+Q(kg)	导轨润滑 Rail Lubrication	H	认证 Certifications
A01	≤2.5	0.29~3.22	9/10/15.88/16	1000~2600	油 Oil	150 (I)	GB/CE
				1000~2400	干 Dry		
A02	≤2.5	0.29~3.22	10/15.88/16	2600~5000	油 Oil	180 (II)	GB/CE
				2400~5000	干 Dry		
A03	≤1.0	0.29~1.5	15.88/16	5000~6500	油 Oil	180 (II)	GB

LSG06



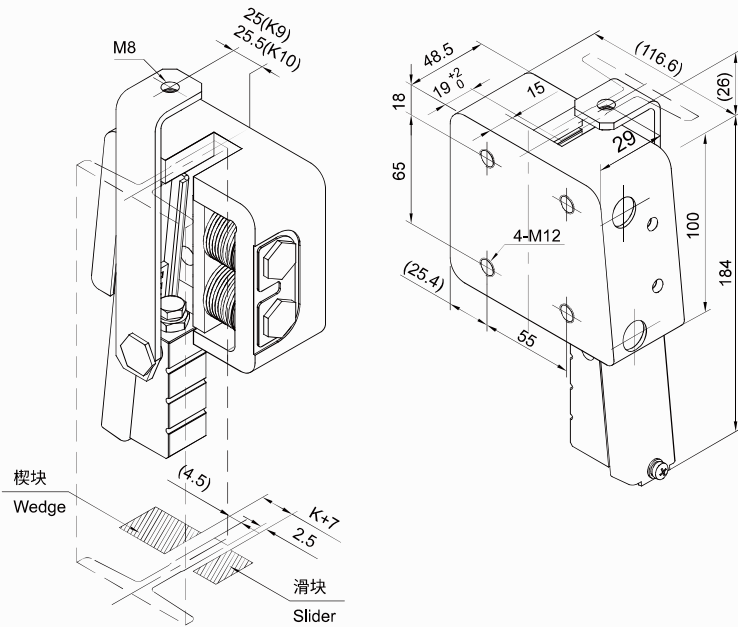
序号 No.	额定速度 Rated Speed (m/s)	触发速度 Tripping Speed (m/s)	导轨宽度 Rail Width (mm)	允许质量 Permitted P+Q(kg)	导轨润滑 Rail Lubrication	认证 Certifications
A01	≤3.0	0.29~3.83	9/10/15.88/16	800~3300	油 Oil	GB/CE
				800~3000	干 Dry	



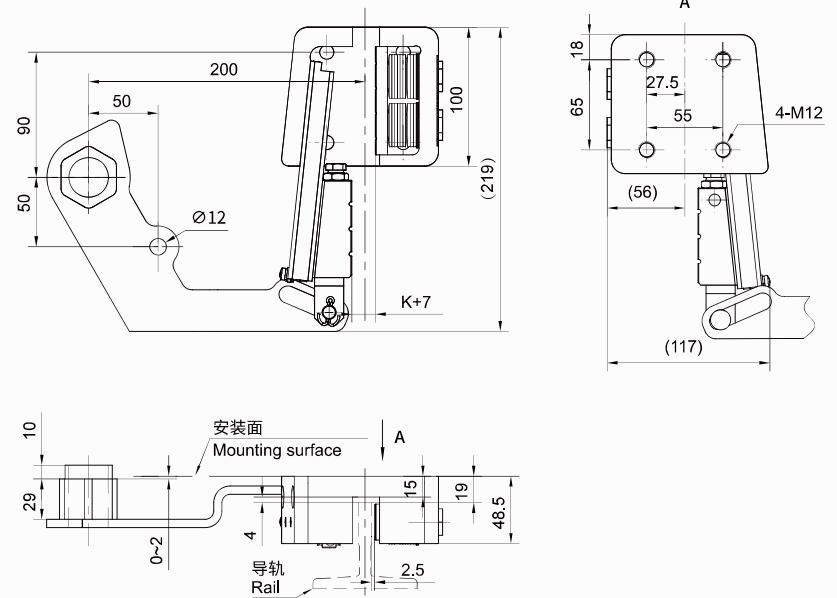
序号 No.	零件 Part	附图 Diagram
1	弹性销 (4个) Spring Pin (4 Pcs)	6×55
2	扭簧 (左右各1) Torsion Spring (1 L, 1 R)	
3	打杆 (1个) Striking Lever (1 Pcs)	
4	销轴 (2个) Pin Shaft (2 Pcs)	
5	拉手 (左右各1) Handle (1 L, 1 R)	
6	短销 (1个) Short Pin (1 Pcs)	
7	开口销 (4个) Cotter Pin (4 Pcs)	2.5×20
8	弹性销 (4个) Spring Pin (4 Pcs)	12×16

序号 No.	额定速度 Rated Speed (m/s)	触发速度 Tripping Speed (m/s)	导轨宽度 Rail Width (mm)	允许质量 Permitted P+Q(kg)	导轨润滑 Rail Lubrication	认证 Certifications
B01	≤3.0	0.29~3.83	9/10/15.88/16	800~3300	油 Oil	GB/CE
				800~3000	干 Dry	

LSG06B



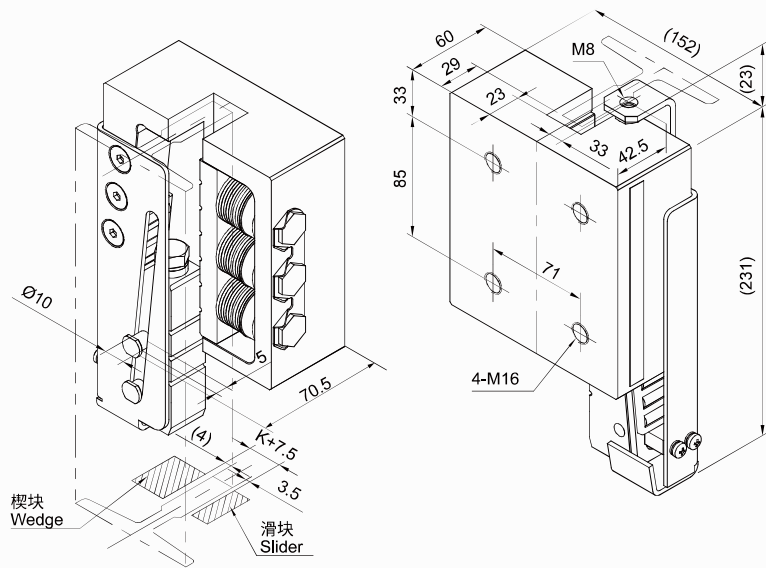
序号 No.	额定速度 Rated Speed (m/s)	触发速度 Tripping Speed (m/s)	导轨宽度 Rail Width (mm)	允许质量 Permitted P+Q(kg)	导轨润滑 Rail Lubrication	认证 Certifications
A01	≤1.75	0.29~2.33	9/10	800~2600	油 Oil 干 Dry	GB/CE



序号 No.	零件 Part	附图 Diagram
1	弹性销 (4个) Spring Pin (4 Pcs)	6×55
2	扭簧 (左右各1) Torsion Spring (1 L, 1 R)	
3	打杆 (1个) Striking Lever (1 Pcs)	
4	销轴 (2个) Pin Shaft (2 Pcs)	
5	拉手 (左右各1) Handle (1 L, 1 R)	
6	短销 (1个) Short Pin (1 Pcs)	
7	开口销 (4个) Cotter Pin (4 Pcs)	2.5×20
8	弹性销 (4个) Spring Pin (4 Pcs)	12×16

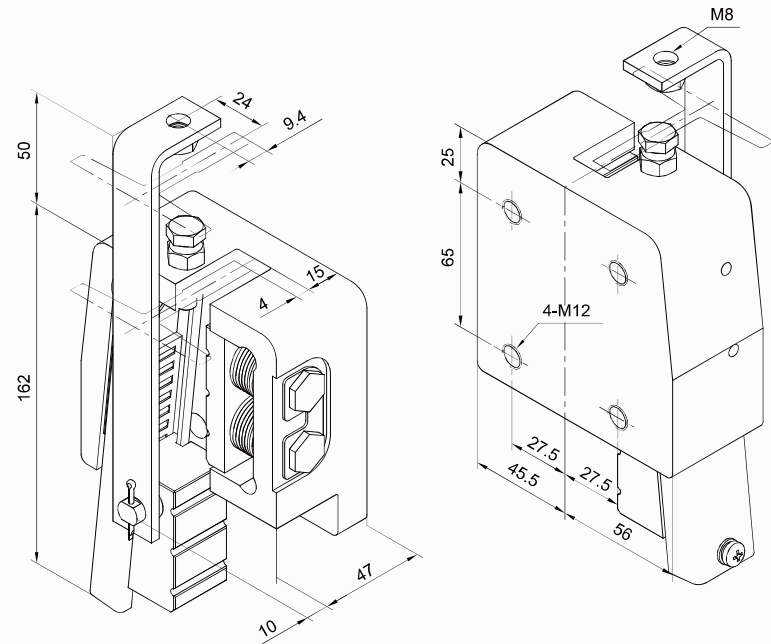
序号 No.	额定速度 Rated Speed (m/s)	触发速度 Tripping Speed (m/s)	导轨宽度 Rail Width (mm)	允许质量 Permitted P+Q(kg)	导轨润滑 Rail Lubrication	认证 Certifications
B01	≤1.75	0.29~2.33	9/10	800~2600	油 Oil 干 Dry	GB/CE

LSG06A



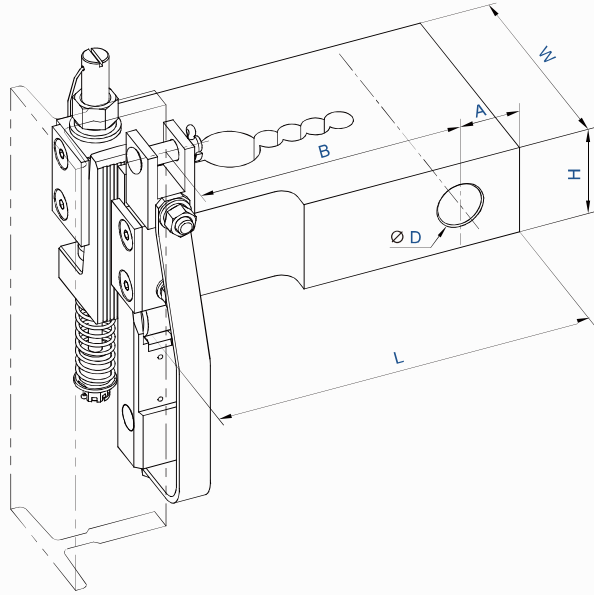
序号 No.	额定速度 Rated Speed (m/s)	触发速度 Tripping Speed (m/s)	导轨宽度 Rail Width (mm)	允许质量 Permitted P+Q(kg)	导轨润滑 Rail Lubrication	认证 Certifications
A01	≤3.0	0.29~3.83	15.88/16	2000~5500	油 Oil 干 Dry	GB/CE

LSG08



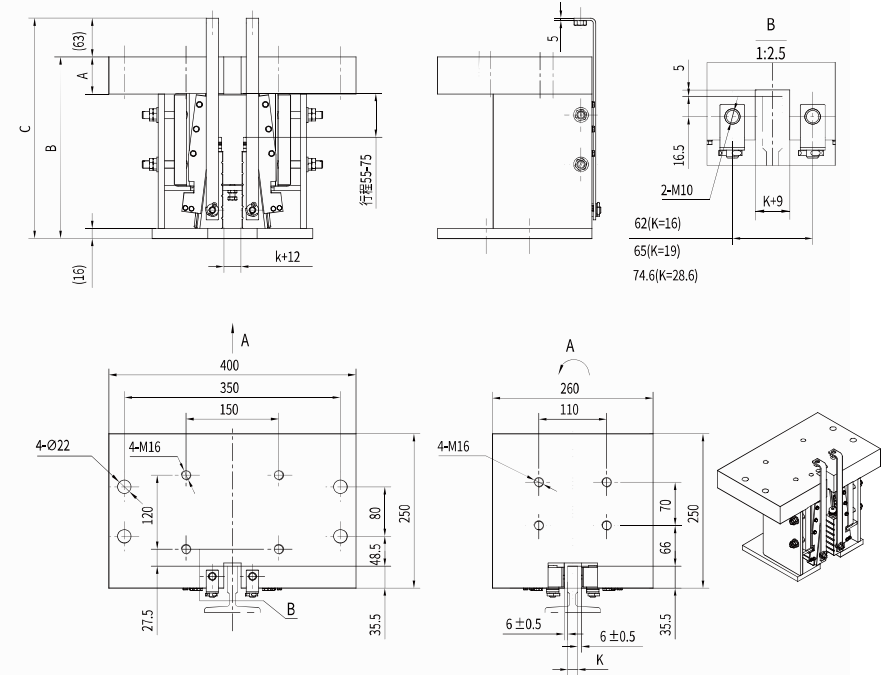
序号 No.	额定速度 Rated Speed (m/s)	触发速度 Tripping Speed (m/s)	导轨宽度 Rail Width (mm)	允许质量 Permitted P+Q(kg)	导轨润滑 Rail Lubrication	认证 Certifications
A01	≤1.0	0.29~1.5	9/10	560~1500	油 Oil 干 Dry	GB

LSG10



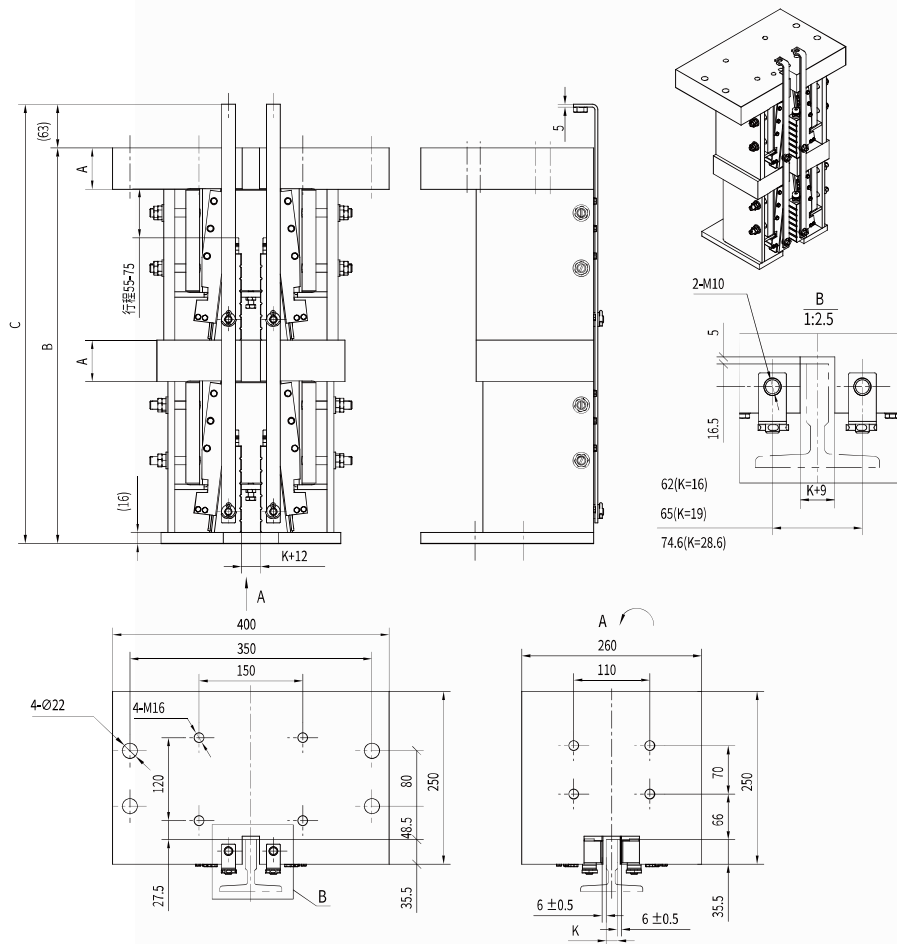
接口 Interface	额定速度 Rated Speed (m/s)	触发速度 Tripping Speed (m/s)	允许质量 Permitted P+Q(kg)	导轨宽度 Rail Width (mm)	导轨润滑 Rail Lubrication	A	B	D	L	W	H	认证 Certifications
A	≤2.5	0.29~3.22	4000~7000	15.88/16/19	油 Oil	38	158.5	28	238	138	60	GB/CE
	2.5~3.0	0.29~3.83	2800~6300	15.88/16/19	干 Dry							
	3.5~4.0	0.29~5.06	2800~6300	15.88/16/19	干 Dry							
B	≤2.5	0.29~3.22	2800~5200	15.88/16	油 Oil	22	141	22	197	94	50	GB/CE
	≤2.5	0.29~3.22	2600~4200	15.88/16	干 Dry							
C	≤2.5	0.29~3.22	1600~3200	9/10/15.88/16	油 Oil	22	141	22	197	81	50	GB/CE
	≤2.5	0.29~3.22	1600~3200	9/10/15.88/16	干 Dry							
D	≤2.5	0.29~3.22	650~2000	9/10/15.88/16	油 Oil	22	141	22	197	81	50	GB/CE
	≤2.5	0.29~3.22	650~2000	9/10/15.88/16	干 Dry							

LSG17



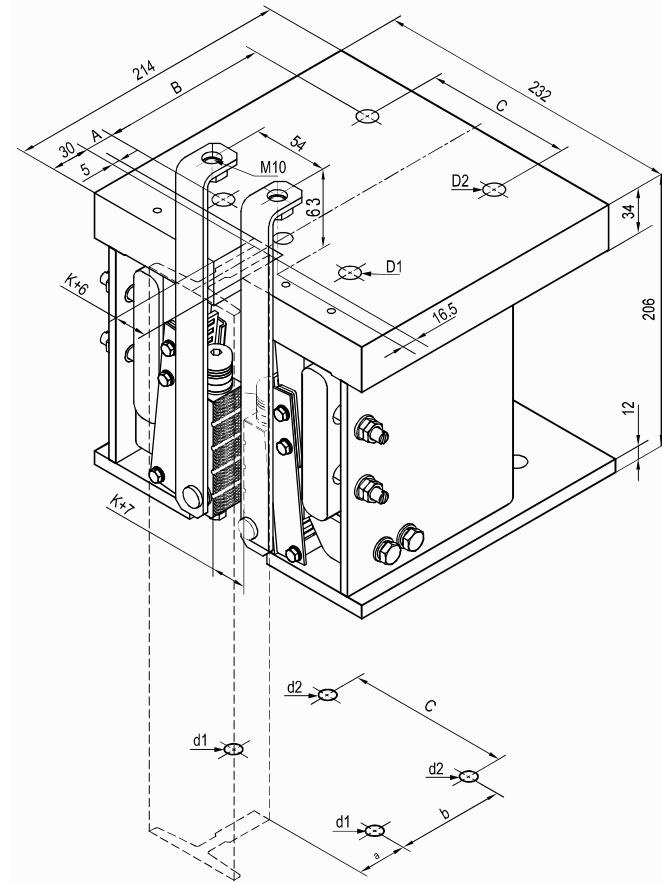
序号 No.	额定速度 Rated Speed (m/s)	触发速度 Tripping Speed (m/s)	导轨宽度 Rail Width (mm)	允许质量 Permitted P+Q(kg)	导轨润滑 Rail Lubrication	A	B	C	认证 Certifications
A01	≤2.0	0.29~2.62	15.88/16/19	5000~10000	油 Oil 干 Dry	34	268	331	GB/CE
A03	≤1.5	0.29~2.04	16/19/28.6	10000~15000	油 Oil	60	294	357	GB/CE

LSG17



序号 No.	额定速度 Rated Speed (m/s)	触发速度 Tripping Speed (m/s)	导轨宽度 Rail Width (mm)	允许质量 Permitted P+Q(kg)	导轨润滑 Rail Lubrication	A	B	C	认证 Certifications
A02	≤2.0	0.29~2.62	15.88/16/19	10000~20000	油 Oil 干 Dry	50	552	615	GB/CE
A04	≤1.5	0.29~2.04	16/19/28.6	15000~30000	油 Oil	60	572	635	GB/CE

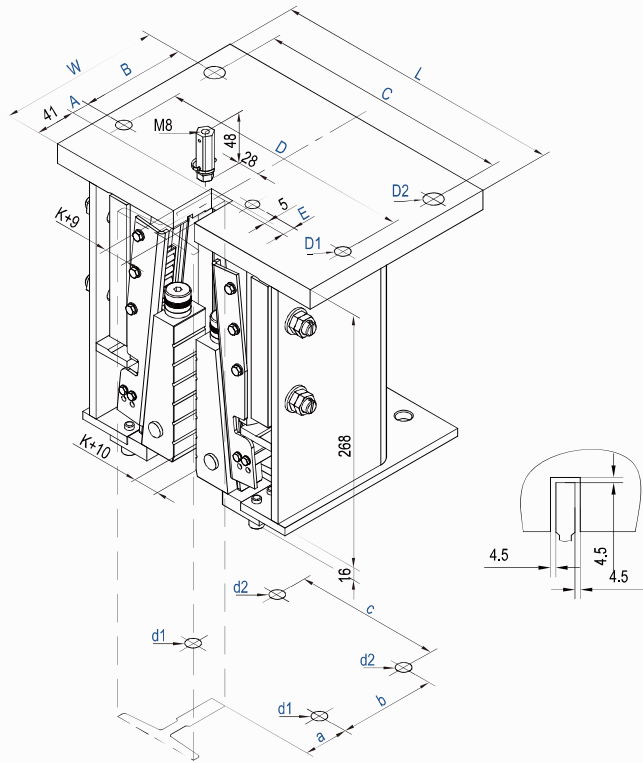
LSG18



额定速度 Rated Speed (m/s)	触发速度 Tripping Speed (m/s)	允许质量 Permitted P+Q(kg)	导轨宽度 Rail Width (mm)	导轨润滑 Rail Lubrication	认证 Certifications
≤1.5	0.29~2.04	6500~12500	16/19/28.6	油 Oil 干 Dry	GB

序号 No.	底梁安装接口 Frame Interface					导轨安装接口 Guide Shoes Interface				
	A	B	C	D1	D2	a	b	c	d1	d2
A01	20	125	110	2-M16	2-M16	75	100	150	2-M16	2-M16
A02	20	125	110	2-M16	2-M16	65	70	110	2-M16	2-M16

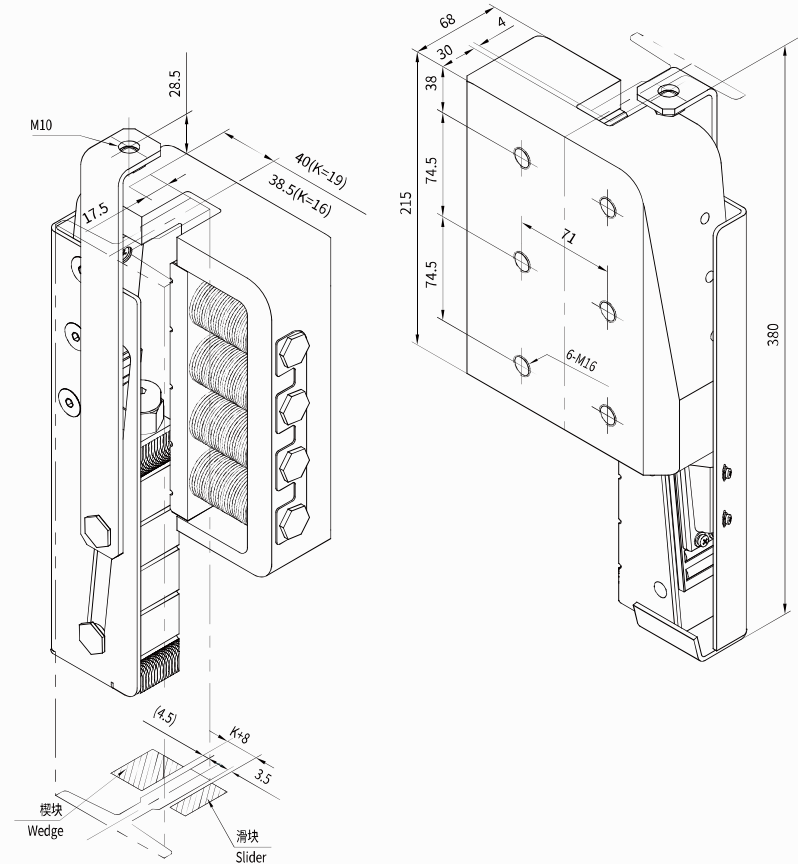
LSG20



额定速度 Rated Speed (m/s)	触发速度 Tripping Speed (m/s)	允许质量 Permitted P+Q(kg)	导轨宽度 Rail Width (mm)	导轨润滑 Rail Lubrication	认证 Certifications
≤3.0	0.29~3.83	2800~7600	15.88/16/19	干 Dry	GB
3.5~4.0	0.29~5.06	2800~5600			

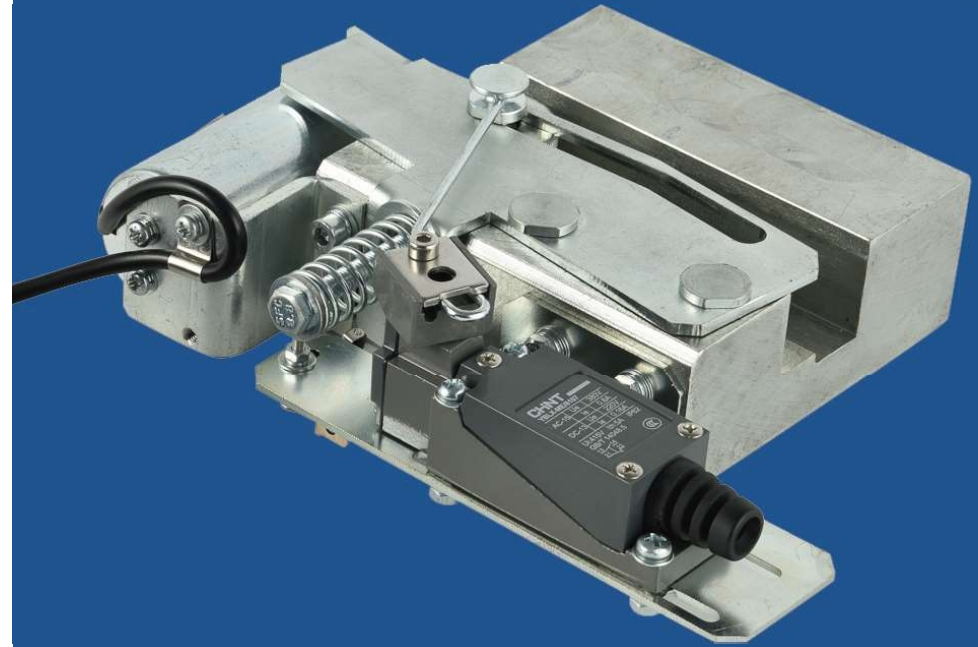
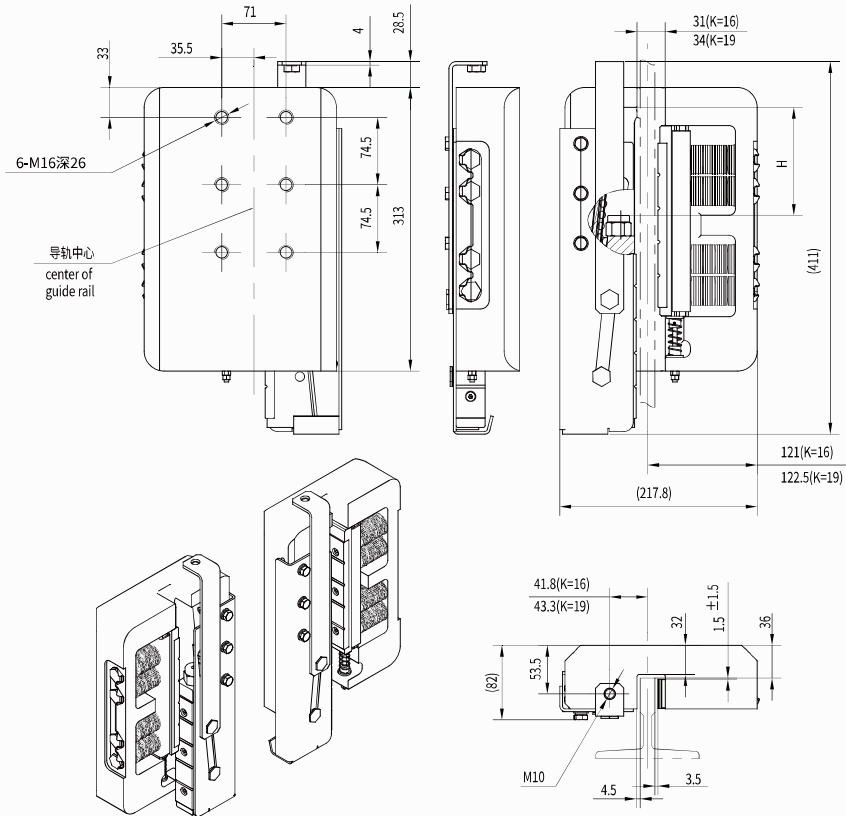
序号 No.	底梁安装接口 Frame Interface							导轨安装接口 Guide Shoes Interface						
	A	B	C	D	E	L	W	D1	D2	a	b	c	d1	d2
A01	12.5	125	90	90	12.5	252	198	2-M16	2-M16	39.5	50	100	2-M12	2-M12
A02	5.5	120	260	260	12.5	300	205	2-φ14	2-φ16	45	100	150	2-M16	2-M16

LSG22



序号 No.	额定速度 Rated Speed (m/s)	触发速度 Tripping Speed (m/s)	允许质量 Permitted P+Q(kg)	导轨宽度 Rail Width (mm)	导轨润滑 Rail Lubrication	认证 Certifications
A01	≤4.0	0.29~5.06	2000~7450	15.88/16/19	油 Oil 干 Dry	GB/CE

LSG22A

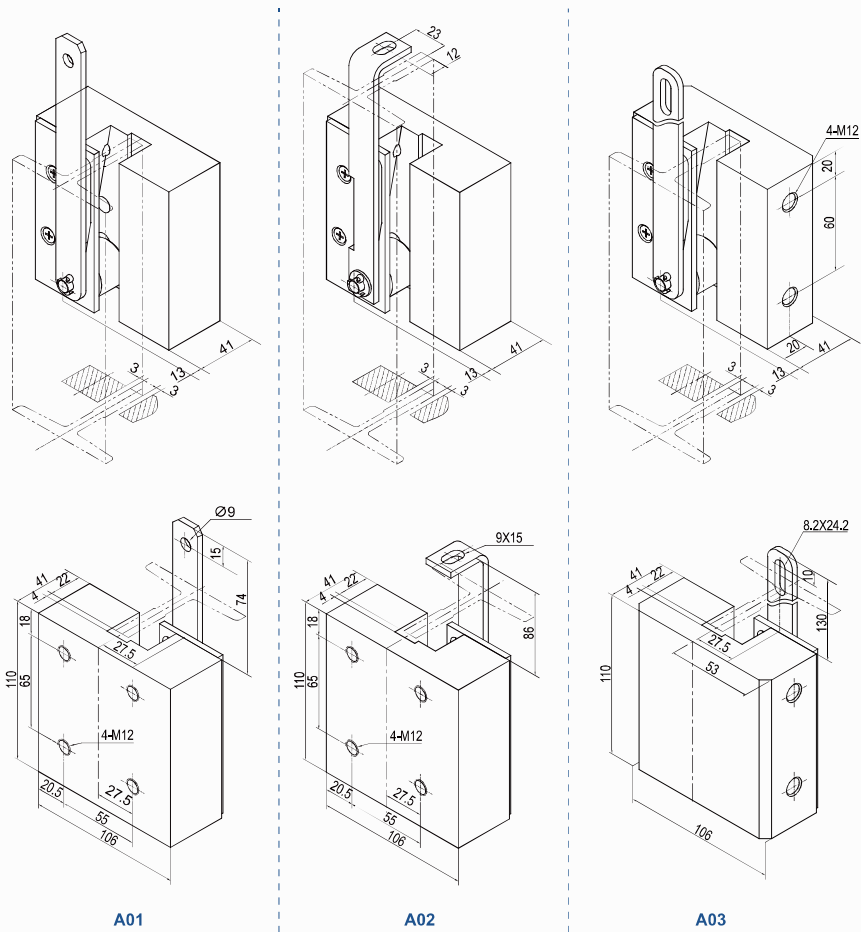


序号 No.	额定速度 Rated Speed (m/s)	触发速度 Tripping Speed (m/s)	允许质量 Permitted P+Q(kg)	导轨宽度 Rail Width (mm)	导轨润滑 Rail Lubrication	认证 Certifications
A01	≤5.0	0.29-6.3	3000-7350	16/19	干 Dry	GB



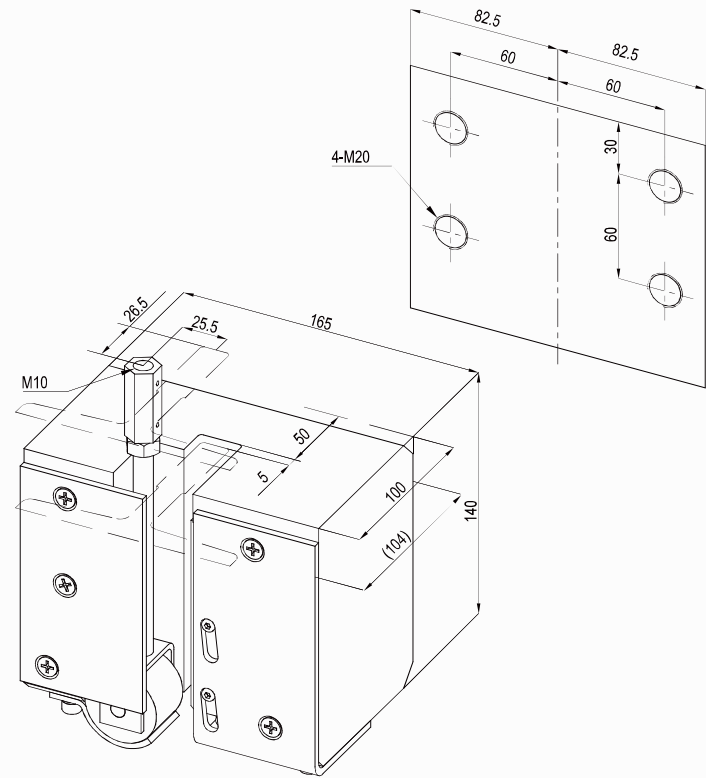
瞬时式安全钳
Instantaneous Safety Gear

LSG02



序号 No.	额定速度 Rated Speed (m/s)	触发速度 Tripping Speed (m/s)	允许质量 Permitted P+Q(kg)	导轨宽度 Rail Width (mm)	认证 Certifications
A01	0.25~0.63	0.29~0.8	≤1500	9/10/15.88/16	GB
A02					
A03					

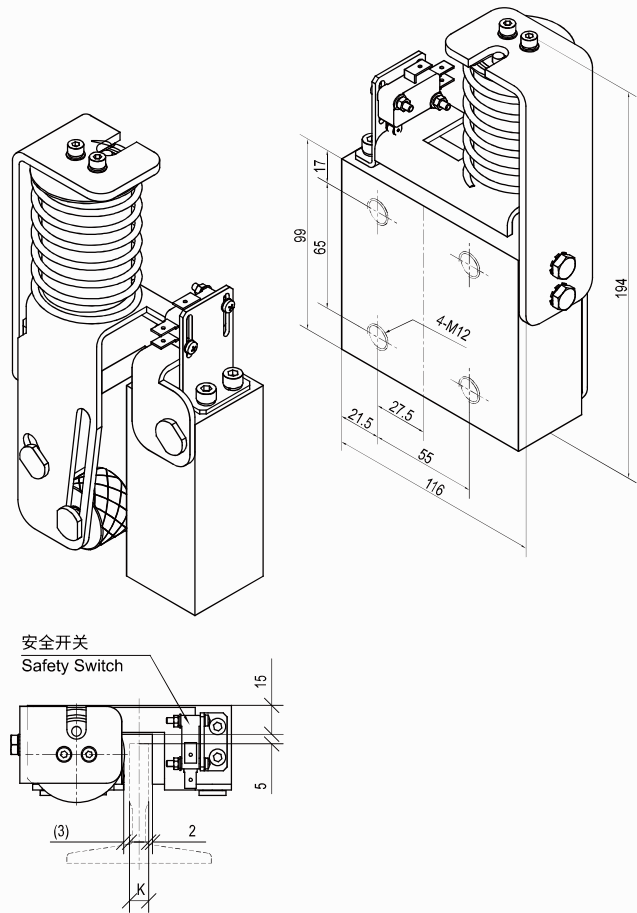
LSG05



额定速度 Rated Speed (m/s)	触发速度 Tripping Speed (m/s)	允许质量 Permitted P+Q(kg)	导轨宽度 Rail Width (mm)	认证 Certifications
0.25~0.63	0.29~0.8	≤13000	16	GB

瞬时式安全钳
INSTANTANEOUS SAFETY GEAR

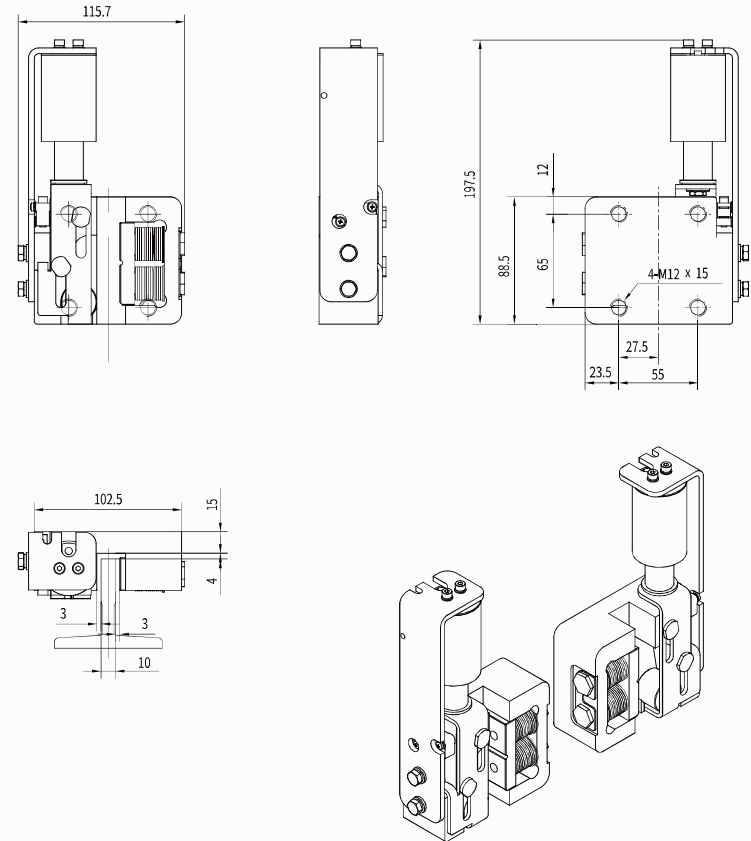
LSE03



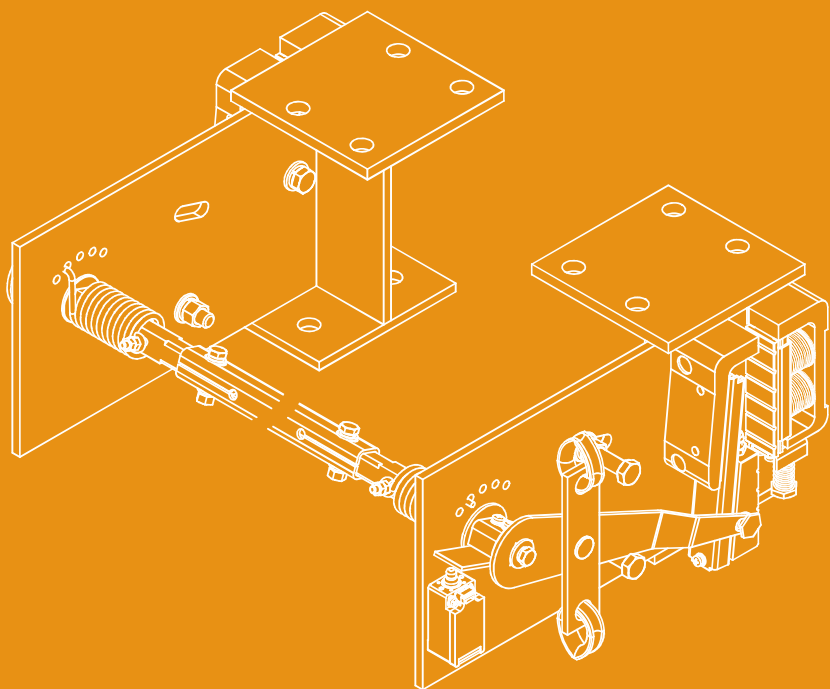
序号 No.	额定速度 Rated Speed (m/s)	触发速度 Tripping Speed (m/s)	允许质量 Permitted P+Q(kg)	导轨宽度 Rail Width (mm)	输入电压 Input Voltage
B01	≤0.4	0.29~0.63	≤1300	9/10	220V AC
B02	≤0.4	0.29~0.63	≤1300	9/10	48V DC

电触发安全钳
ELECTRIC TRIPPING SAFETY GEAR

LSE07



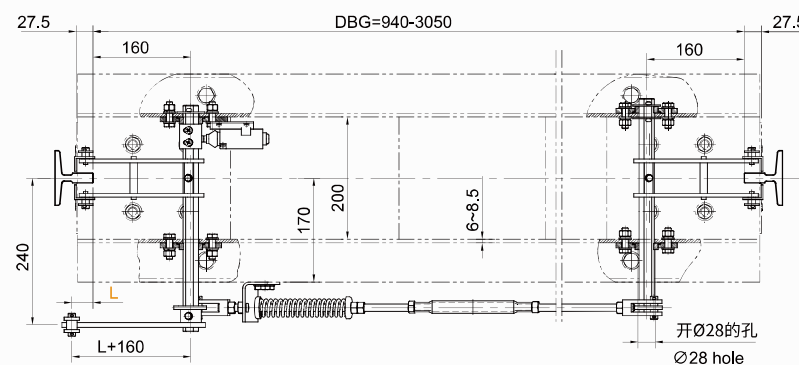
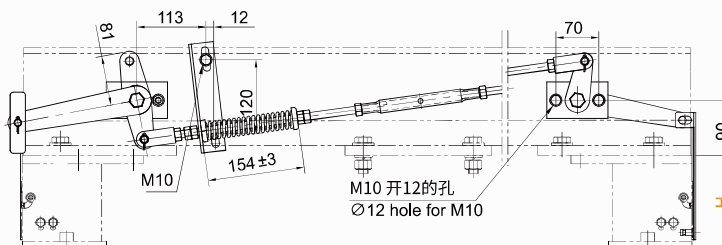
序号 No.	额定速度 Rated Speed (m/s)	触发速度 Tripping Speed (m/s)	允许质量 Permitted P+Q(kg)	导轨宽度 Rail Width (mm)	导轨润滑 Rail Lubrication	认证 Certifications
A01	≤1.0	0.29~1.5	700~1800	10	油 Oil 干 Dry	GB



安全钳联动机构样式 Linkage Types

安全钳联动机构样式 LINKAGE TYPES

LLD01 仅联动机构 Only Linkage Device



订购时提供:

1. 导轨型号, 导轨距。

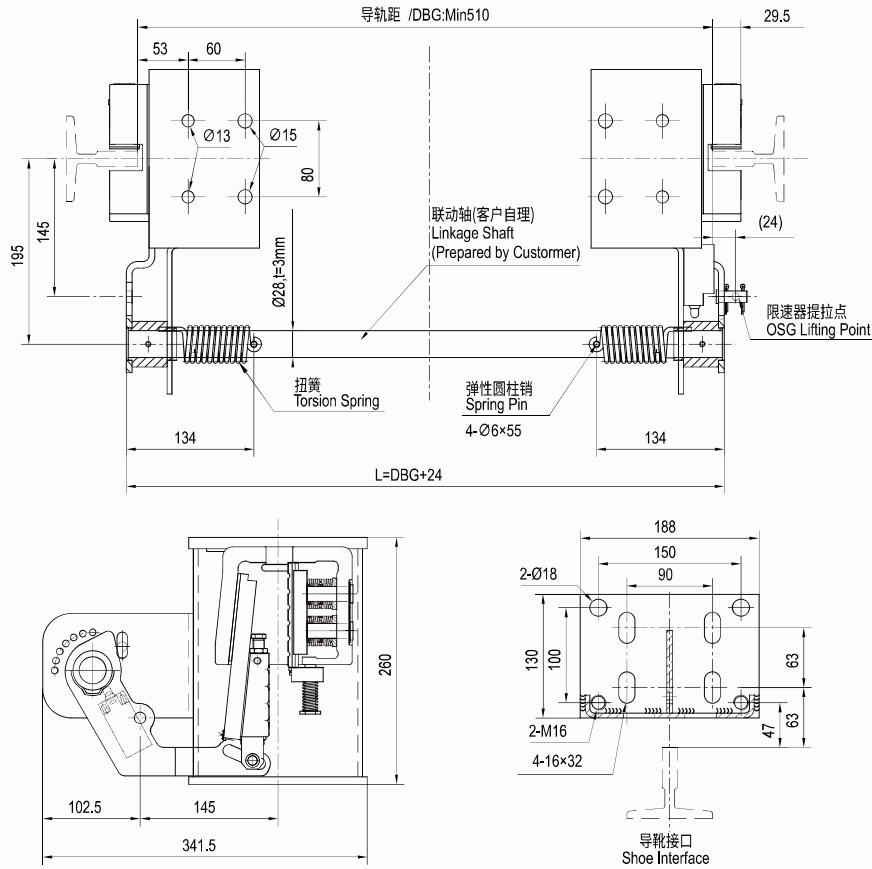
The parameters are provided when ordering:

1. Guide rail type and DBG.

最大静态提拉力 Max. Static Tensile Force (N)	开关类型 Switch	L(mm)	H(mm)
2000	自动复位开关 Self Reset Switch	35 (T75/T89)	150 (LSG03 接口 I)
		48 (T90)	180 (LSG03 接口 II)
		62 (T114)	

安全钳联动机构样式
LINKAGE TYPES

LSD01



订购时提供:

额定速度, 导轨宽度, 允许质量, 导轨润滑状况, 安全钳认证类型。

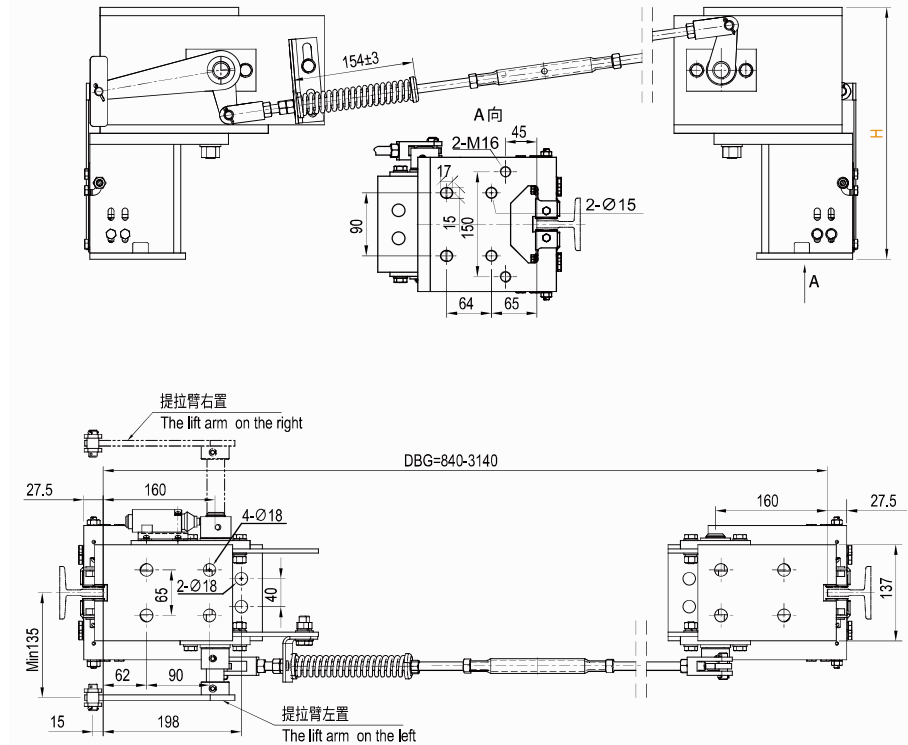
The parameters are provided when ordering:

The rated speed, rail width, permitted load, rail lubrication, certifications type of safety gear.

配套安全钳型号 Type of Safety Gear	最大静态提拉力 Max. Static Tensile Force (N)	允许质量 Permitted P+Q(kg)	额定速度 Rated Speed (m/s)	导轨宽度 Rail Width (mm)	开关类型 Switch	认证 Certifications
LSG01	2000	1000~3600	≤2.5	10/15.88/16	自动复位开关 Self Reset Switch	GB/CE/EAC

安全钳联动机构样式
LINKAGE TYPES

LSD02



订购时提供:

1. 额定速度, 导轨宽度, 允许质量, 导轨润滑状况, 认证类型。
2. 导轨距和提拉臂位置左置或右置。

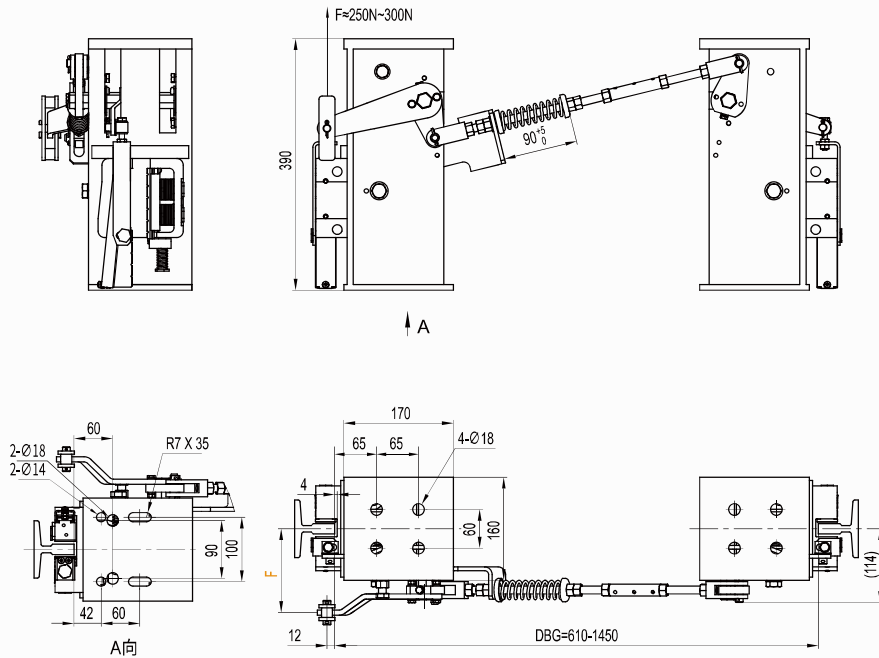
The parameters are provided when ordering:

1. The rated speed, rail width, permitted load, rail lubrication, certifications type.
2. DBG and left lifting or righting.

配套安全钳型号 Type of Safety Gear	最大静态提拉力 Max. Static Tensile Force (N)	允许质量 Permitted P+Q(kg)	额定速度 Rated Speed (m/s)	导轨宽度 Rail Width (mm)	开关类型 Switch	导轨润滑 Rail Lubrication	H (mm)	认证 Certifications
LSG03	2000	800~5000	≤2.5	10 15.88 16	自动复位 Self Reset Switch	油 Oil 干 Dry	330 (LSG03 I) 360 (LSG03 II)	GB/CE

安全钳联动机构样式
LINKAGE TYPES

LSD03



订购时提供:

1. 额定速度, 导轨宽度, 允许质量, 导轨润滑状况, 认证类型。
2. 导轨距和提拉臂位置左置或右置。

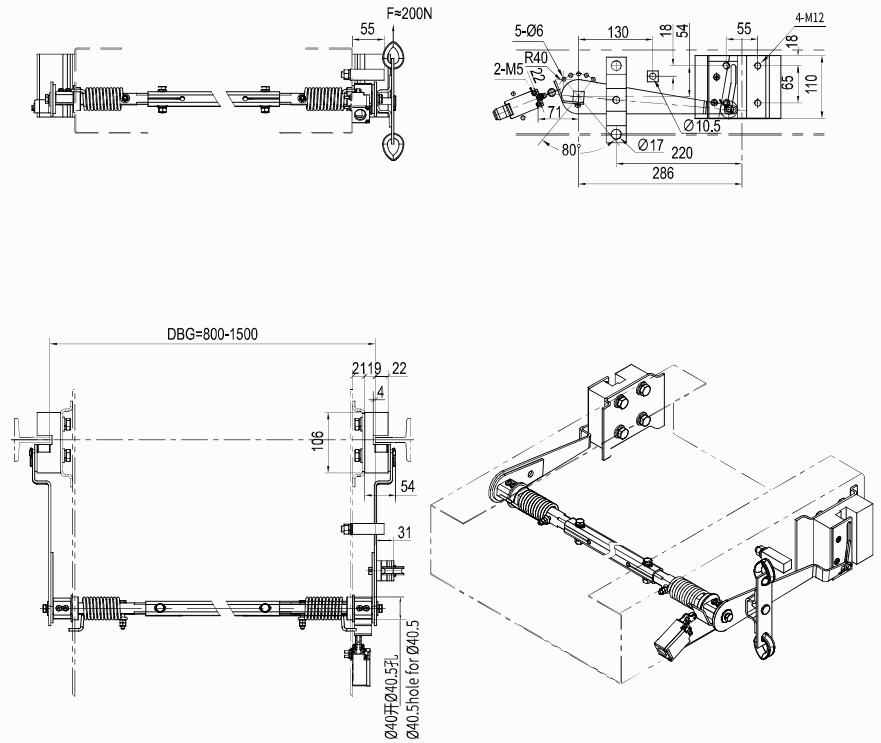
The parameters are provided when ordering:

1. The rated speed, rail width, permitted load, rail lubrication, certifications type.
2. DBG and left or right.

配套安全钳型号 Type of Safety Gear	额定速度 Rated Speed (m/s)	触发速度 Tripping Speed (m/s)	导轨宽度 Rail Width (mm)	允许质量 Permitted P+Q(kg)	导轨润滑 Rail Lubrication	F	认证 Certifications
LSG06	≤3.0	0.29~3.83	9	800~3300	油 Oil	130	GB/CE
			10		140		
			15.88		150		
			16	800~3300	干 Dry	160	
			170				
180							

安全钳联动机构样式
LINKAGE TYPES

LSD05



订购时提供:

导轨宽度和导轨距。

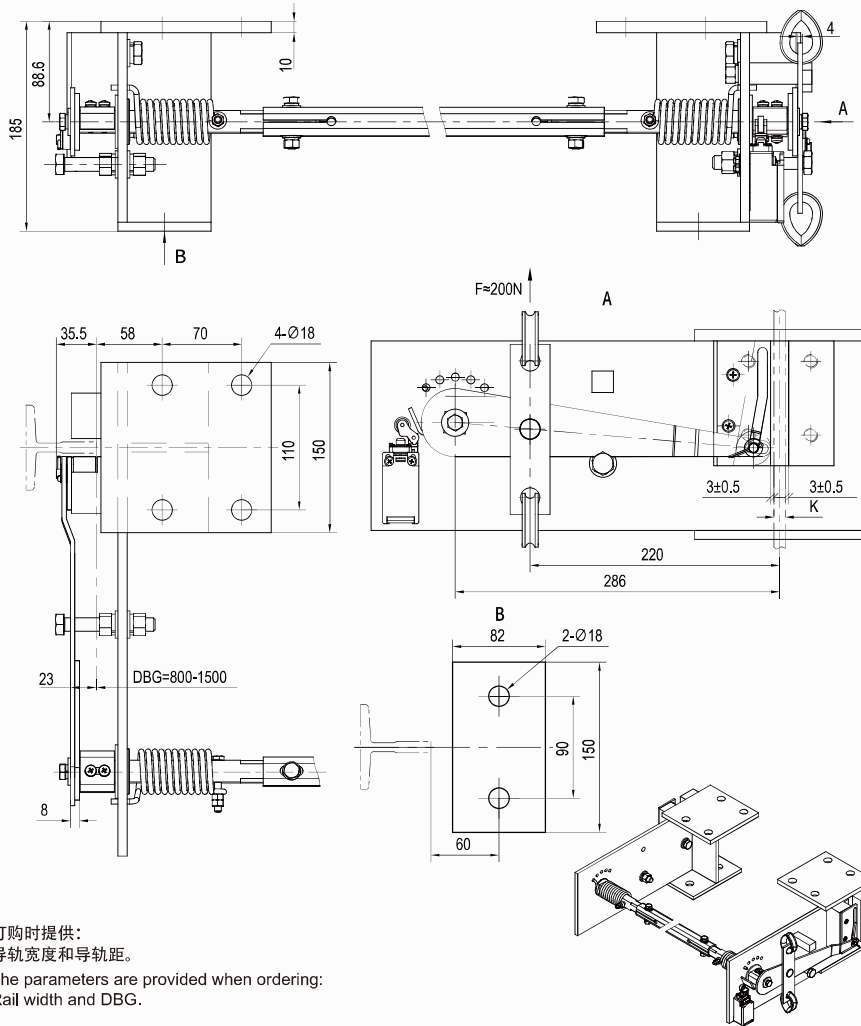
The parameters are provided when ordering:

Rail width and DBG.

配套安全钳 型号 Type of Safety Gear	最大静态提拉力 Max. Static Tensile Force (N)	允许质量 Permitted P+Q(kg)	额定速度 Rated Speed (m/s)	导轨宽度 Rail Width (mm)	开关类型 Switch	认证 Certifications
LSG02	1500	≤1500	≤0.63	9/10	自动复位 Self Reset Switch	GB

安全钳联动机构样式
LINKAGE TYPES

LSD06

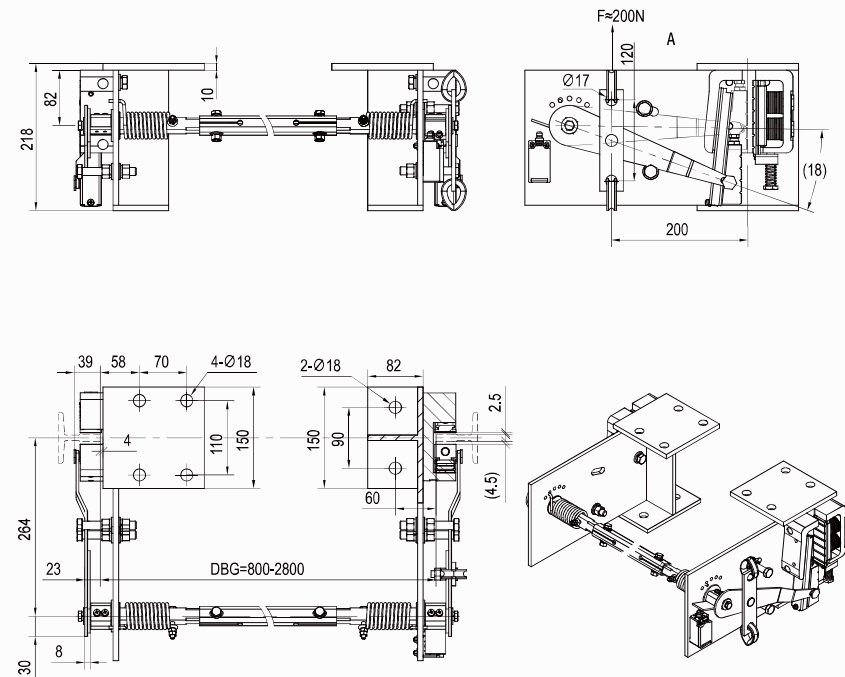


订购时提供：
导轨宽度和导轨距。
The parameters are provided when ordering:
Rail width and DBG.

配套安全钳 型号 Type of Safety Gear	最大静态提拉力 Max. Static Tensile Force (N)	允许质量 Permitted P+Q(kg)	额定速度 Rated Speed (m/s)	导轨宽度 Rail Width (mm)	开关类型 Switch	认证 Certifications
LSG02	1500	≤1500	≤0.63	9/10	自动复位 Self Reset Switch	GB

安全钳联动机构样式
LINKAGE TYPES

LSD07



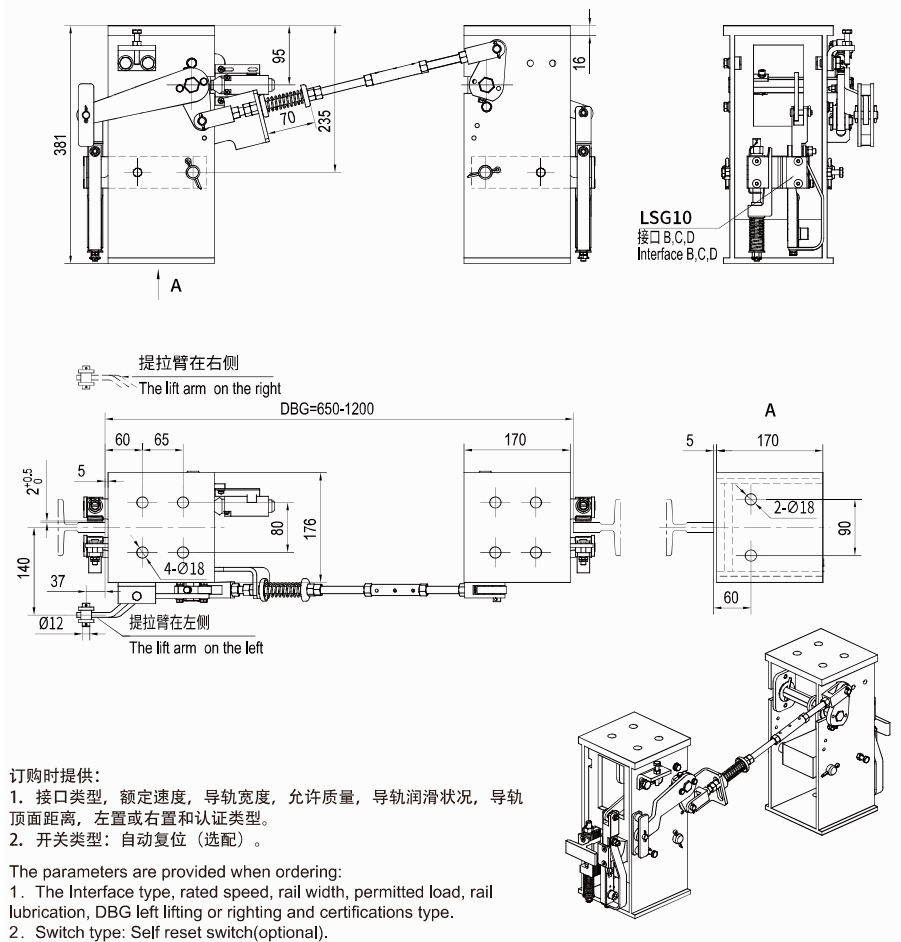
订购时提供：
安全钳的型号，额定速度，导轨宽度，允许质量，导轨润滑状况，导轨顶面距离和认证类型。

The parameters are provided when ordering:
The type of safety gear, rated speed, rail width, permitted load, rail lubrication, DBG and certification type.

配套安全钳 型号 Type of Safety Gear	额定速度 Rated Speed (m/s)	触发速度 Tripping Speed (m/s)	导轨宽度 Rail Width (mm)	允许质量 Permitted P+Q(kg)	导轨润滑 Rail Lubrication	认证 Certifications
LSG06	≤3.0	0.29~3.83	9/10/15.88/16	800~3300 800~3000	油 Oil 干 Dry	GB/CE
LSG06B	≤1.75	0.29~2.33	9/10	800~2600	油 Oil 干 Dry	GB/CE

安全钳联动机构样式
LINKAGE TYPES

LSD10



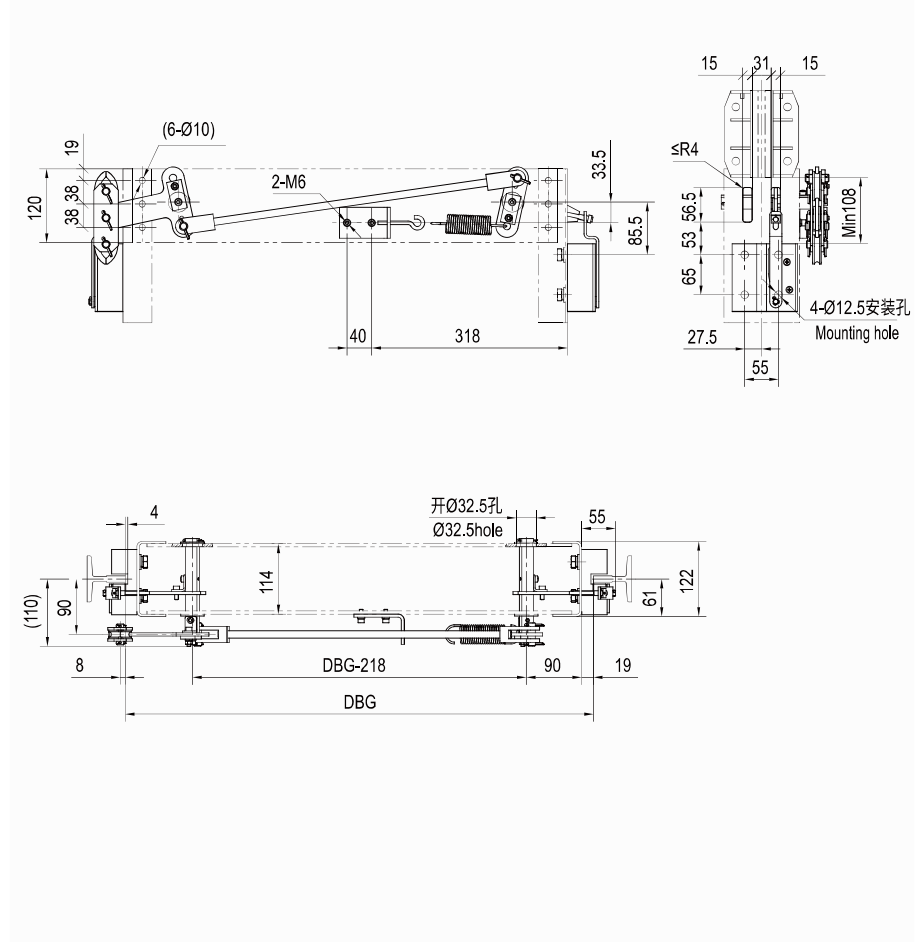
- 订购时提供:
1. 接口类型, 额定速度, 导轨宽度, 允许质量, 导轨润滑状况, 导轨顶部距离, 左置或右置和认证类型。
 2. 开关类型: 自动复位 (选配)。

- The parameters are provided when ordering:
1. The Interface type, rated speed, rail width, permitted load, rail lubrication, DBG left lifting or righting and certifications type.
 2. Switch type: Self reset switch(optional).

配套安全钳 型号 Type of Safety Gear	接口 Interface	额定速度 Rated Speed (m/s)	触发速度 Tripping Speed (m/s)	允许质量 Permitted P+Q(kg)	导轨宽度 Rail Width (mm)	导轨润滑 Rail Lubrication	认证 Certifications
LSG10	B	≤2.5	0.29~3.22	2800~5200	15.88/16	油 Oil	GB/CE
		≤2.5	0.29~3.22	2600~4200	15.88/16/19	干 Dry	GB/CE
	C	≤2.5	0.29~3.22	1600~3200	9/10/15.88/16	油 Oil	GB/CE
		≤2.5	0.29~3.22	1600~3200	9/10/15.88/16	干 Dry	GB/CE
	D	≤2.5	0.29~3.22	650~2000	9/10/15.88/16	油 Oil	GB/CE
		≤2.5	0.29~3.22	650~2000	9/10/15.88/16	干 Dry	GB/CE

安全钳联动机构样式
LINKAGE TYPES

LSD11



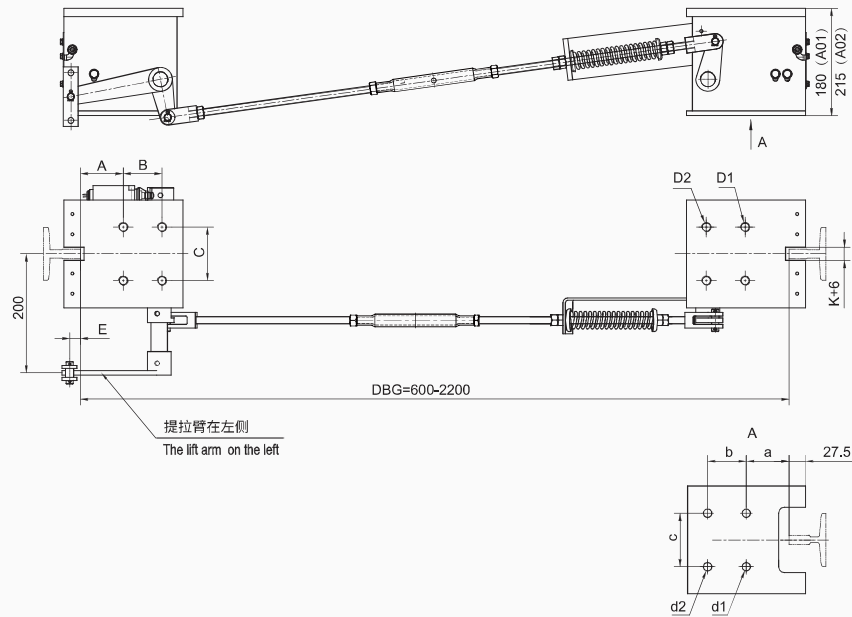
- 订购时提供:
导轨宽度和导轨距。

- The parameters are provided when ordering:
Rail width and DBG.

配套安全钳 型号 Type of Safety Gear	最大静态提拉力 Max. Static Tensile Force (N)	允许质量 Permitted P+Q(kg)	额定速度 Rated Speed (m/s)	导轨宽度 Rail Width (mm)	认证 Certifications
LSG02	1500	≤1500	≤0.63	9/10	GB

安全钳联动机构样式
LINKAGE TYPES

LSD12



订购时提供:

1. 接口类型, 额定速度, 导轨宽度, 允许质量, 导轨润滑状况, 导轨顶面距离, 和左置或右置。
2. 开关类型: 自动复位。

The parameters are provided when ordering:

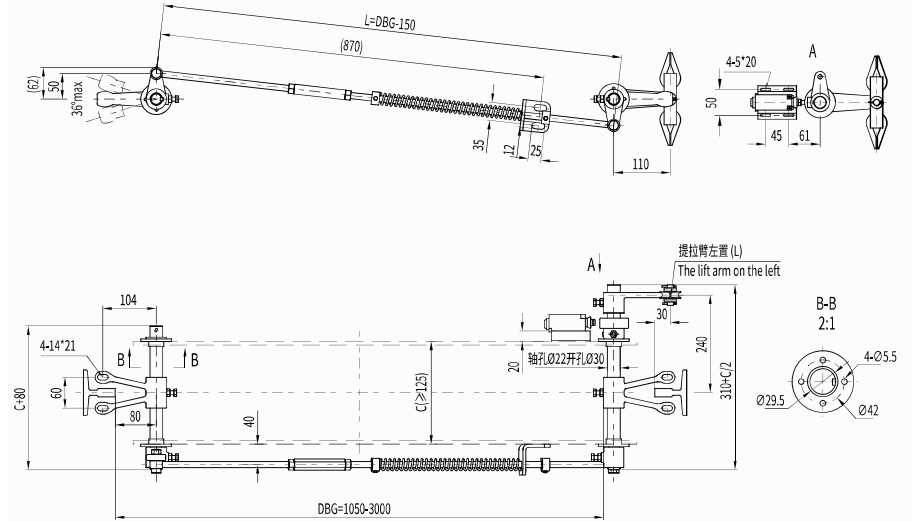
1. The Interface type, rated speed, rail width, permitted load, rail lubrication, DBG and left lifting or righting .
2. Switch type: Self reset switch.

配套安全钳 型号 Type of Safety Gear	接口 Interface	额定速度 Rated Speed (m/s)	触发速度 Tripping Speed (m/s)	允许质量 Permitted P+Q(kg)	导轨宽度 Rail Width (mm)	导轨润滑 Rail Lubrication
LSG03	A01	≤2.5	0.29~3.22	1000~2600	9/10/15.88/16	油 OIL
		≤2.5	0.29~3.22	1000~2400	9/10/15.88/16	干 Dry
	A02	≤2.5	0.29~3.22	2600~5000	10/15.88/16	油 OIL
		≤2.5	0.29~3.22	2400~5000	10/15.88/16	干 Dry

序号 No.	梁接口 Frame Interface			导靴接口 Guide Shoes Interface							
	A	B	C	D1	D2	E	a	b	c	d1	d2
B01	72	65	90	2-M16	2-M16	18	72	65	90	2-φ14	2-φ14
B02	70	70	110	2-M16	2-M16	35	60	/	90	2-M16	/
B03	70	70	110	2-M16	2-M16	35	65	65	90	2-M16	2-M10

安全钳联动机构样式
LINKAGE TYPES

LSD13



订购时提供:

1. 导轨距DBG, 上梁宽度C;
2. 不提供竖直拉杆。

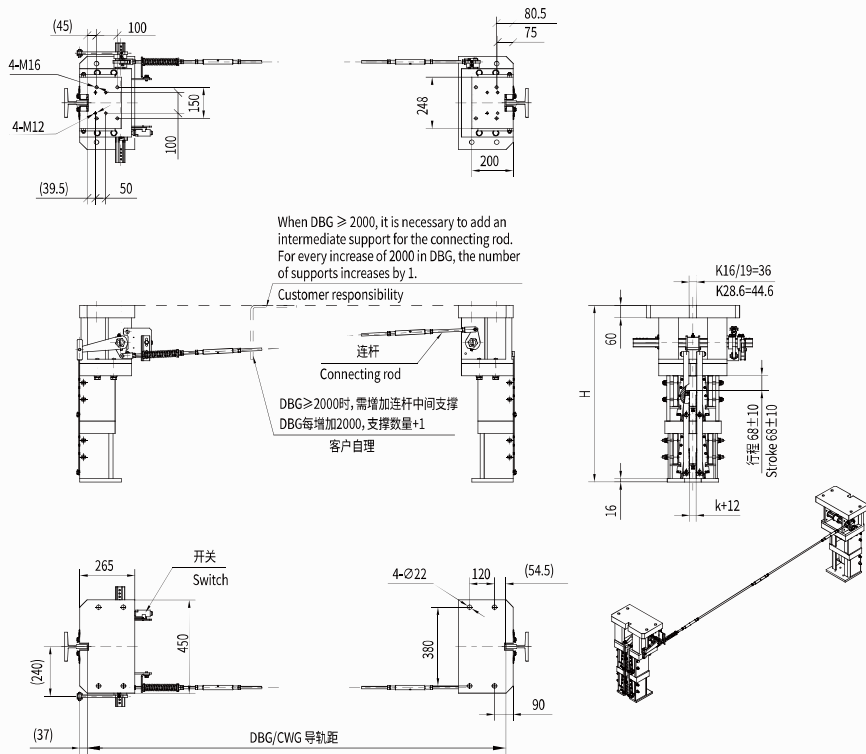
The parameters are provided when ordering:

1. The distance between the guide rails (DBG) and the width of the upper beam (C);
2. Vertical tie rods are not provided.

最大静态提拉力 Max Static Tensile Force (N)	开关类型 Type of Switch	C (≥125)	导轨距 DBG (mm)	提拉位置 L/R
2000	自动复位 Self Reset	200	1050-3000	左置L / 右置R

安全钳联动机构样式
LINKAGE TYPES

LSD15



订购时提供:

- 1.轿厢/对重导轨距DBG/CWG,限速器钢丝绳提拉点位置;
- 2.联动机构适配LSG17单式/复式安全钳。

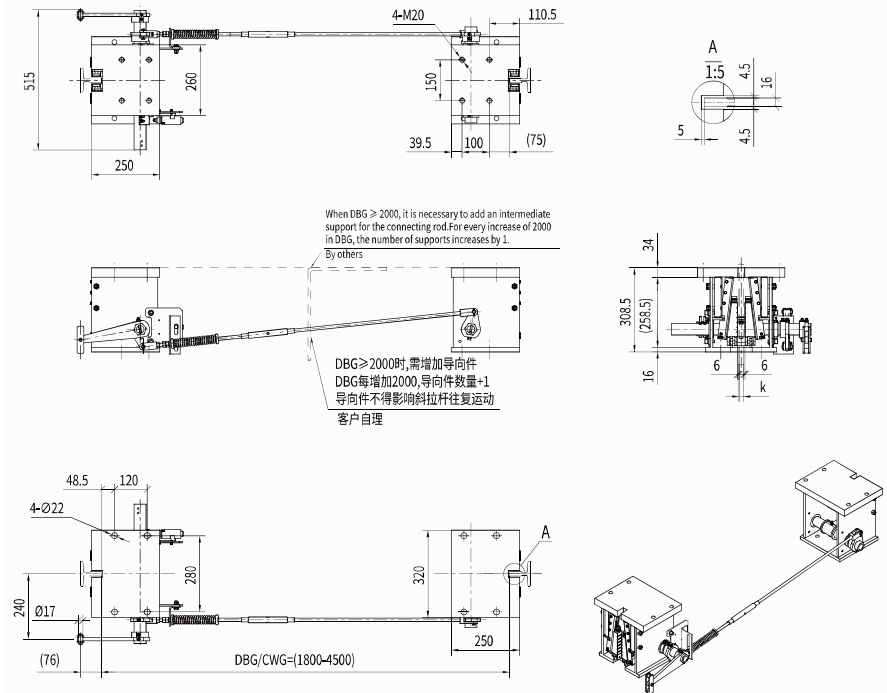
The parameters are provided when ordering:

- 1.The distance between the car guide rail and the counterweight guide rail (DBG/CWG), and the position of OSG wire rope lifting point;
- 2.The linkage is matched for LSG17.

序号 No.	额定速度 Rated Speed (m/s)	触发速度 Tripping Speed (m/s)	允许质量 Permitted P+Q(kg)	导轨宽度 Rail Width (mm)	导轨润滑 Rail Lubrication	H	认证 Certifications
A01	≤2.0	0.29~2.62	5000~10000	15.88/16/19	油 Oil / 干 Dry	554	GB
A02	≤2.0	0.29~2.62	10000~20000	15.88/16/19	油 Oil / 干 Dry	574	GB
A03	≤1.5	0.29~2.04	10000~15000	15.88/16/19/28.6	油 Oil	832	GB
A04	≤1.5	0.29~2.04	15000~30000	15.88/16/19/28.6	油 Oil	852	GB

安全钳联动机构样式
LINKAGE TYPES

LSD16



订购时提供:

- 1.轿厢/对重导轨距DBG/CWG,限速器钢丝绳提拉点位置; 额定速度, 导轨宽度, 允许质量, 导轨润滑状况。
- 2.联动机构适配LSG17单式安全钳。

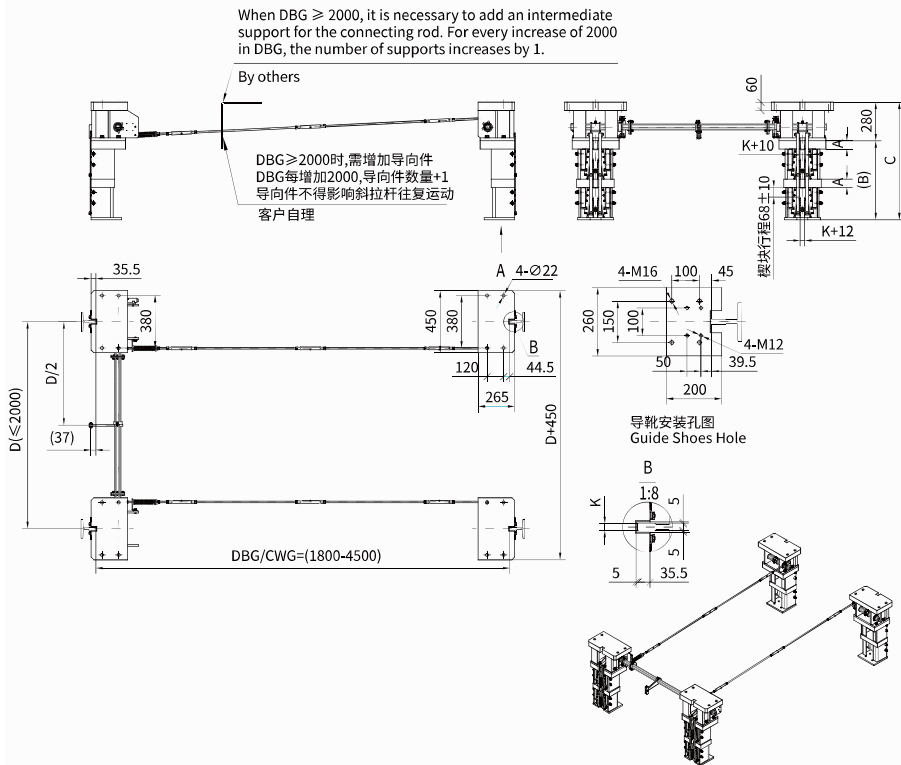
The parameters are provided when ordering:

- 1.The distance between the car guide rail and the counterweight guide rail (DBG/CWG), and the position of OSG wire rope lifting point;V,k,P+Q,Oil/Dry.
- 2.The linkage is matched for LSG17.

序号 No.	额定速度 Rated Speed (m/s)	触发速度 Tripping Speed (m/s)	允许质量 Permitted P+Q(kg)	导轨宽度 Rail Width (mm)	导轨润滑 Rail Lubrication	认证 Certifications
A01	≤2.0	0.29~2.62	5000~10000	16/19	油 Oil / 干 Dry	GB
A03	≤1.5	0.29~2.04	10000~15000	16/19/28.6	油 Oil	GB

安全钳联动机构样式
LINKAGE TYPES

LSD17



订购时提供:

- 1.轿厢/对重导轨DBG/CWG,限速器钢丝绳提拉点位置; 额定速度, 导轨宽度, 允许质量, 导轨润滑状况。
- 2.联动机构适配LSG17复式安全钳。

The parameters are provided when ordering:

- 1.The distance between the car guide rail and the counterweight guide rail (DBG/CWG), and the position of OSG wire rope lifting point;V,k,P+Q,Oil/Dry.
- 2.The linkage is matched for LSG17.

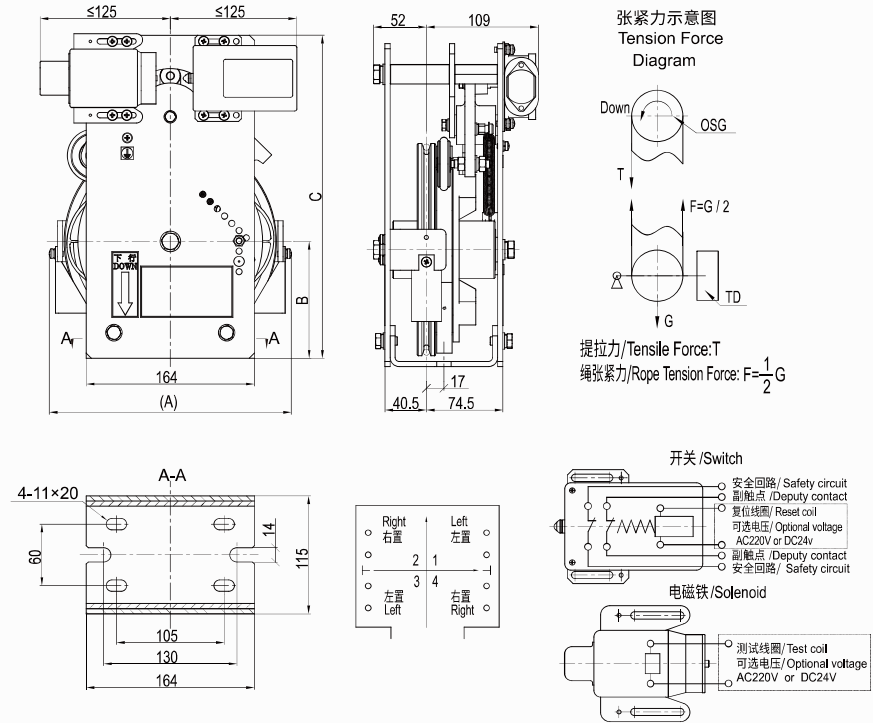
序号 No.	额定速度 Rated Speed (m/s)	触发速度 Tripping Speed (m/s)	允许质量 Permitted P+Q(kg)	导轨宽度 Rail Width (mm)	导轨润滑 Rail Lubrication	A	B	C	认证 Certifications
A01	≤2.0	0.29~2.62	20000~40000	15.88/16/19	油 Oil 干 Dry	50	552	832	GB
A02	≤1.5	0.29~2.04	30000~60000	15.88/16/19 /28.6	油 Oil	60	572	852	GB



限速器

Overspeed Governor

LOG01

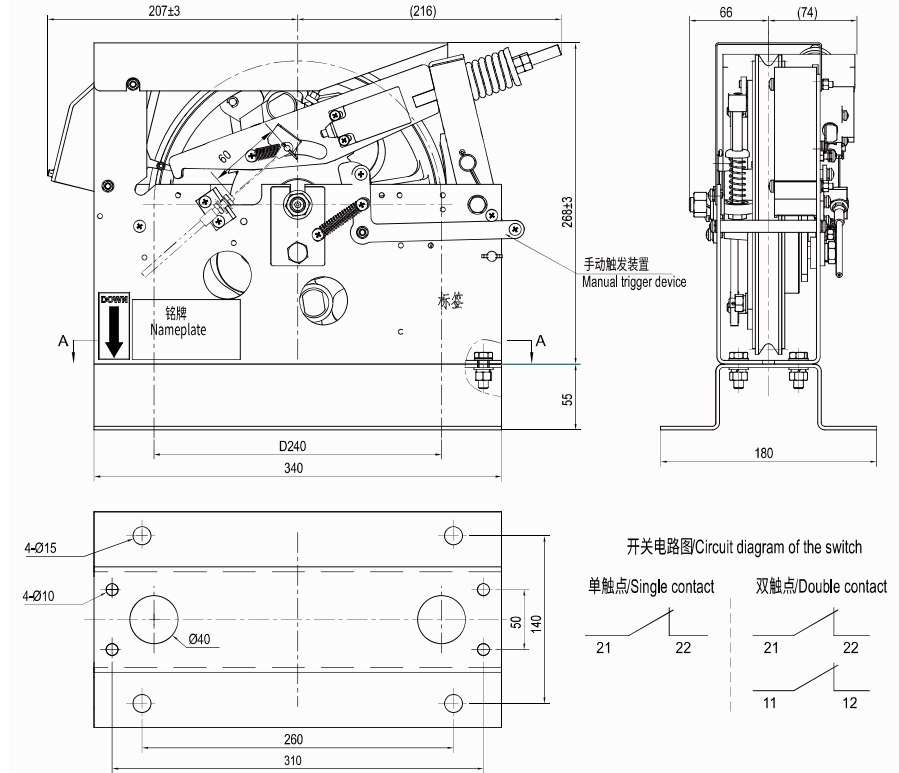


- 注:
1. 开关和电磁铁电压: 标配AC220V; 选配DC24V.
 2. 开关触点数量: 标配单触点; 选配双触点.
 3. 图示为右置.

- Remark:
1. Switch and solenoid Voltage: AC220V (optional DC24V).
 2. Numbers of switch contacts: Single (optional Double).
 3. Shows the right configuration.

序号 No.	绳轮直径 Sheave Diameter (mm)	钢丝绳直径 Rope Diameter (mm)	额定速度 Rated Speed (m/s)	提拉力 Tensile Force T (N)	绳张紧力 Rope Tension Force F (N)	外形尺寸 Overall dimension (AxBxC) (mm)	提升高度 Lifting Height (m)	认证 Certifications
A01	200	6	≤1.0/1.5/ 1.6/1.75	500~1800	280~550	236x114x315	≤90	GB/CE/EAC
A02	250	8	1.0/1.5/1.6/ 1.75/2.0	500~1800	280~550	290x164x365	≤125	GB/CE/EAC
A03	315	8	2.0/2.5	500~1800	280~550	355x171.5x372.5	≤125	GB/CE/EAC

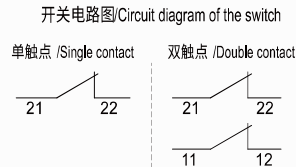
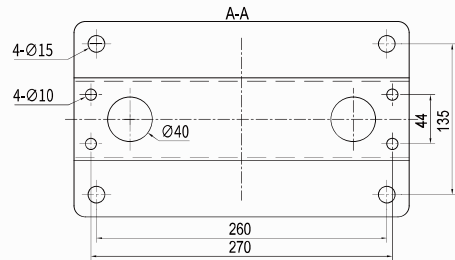
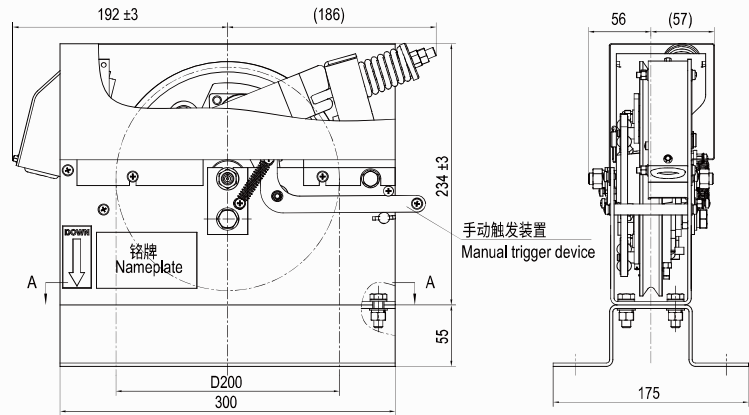
LOG02



序号 No.	绳轮直径 Sheave Diameter (mm)	钢丝绳直径 Rope Diameter (mm)	额定速度 Rated Speed (m/s)	提拉力 Tensile Force T (N)	绳张紧力 Rope Tension Force F (N)	提升高度 Lifting Height (m)	开关 Switch	认证 Certifications
A01	240	8	≤1.0/1.5/ 1.6/1.75	800~1500	280~350	≤125	单触点 Single contact	GB/CE/EAC

限速器
OVERSPEED GOVERNOR

LOG03



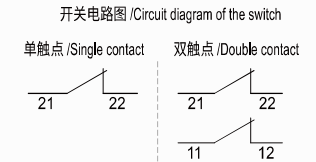
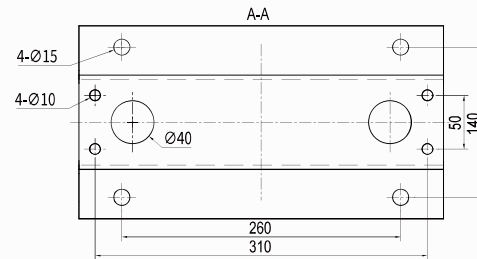
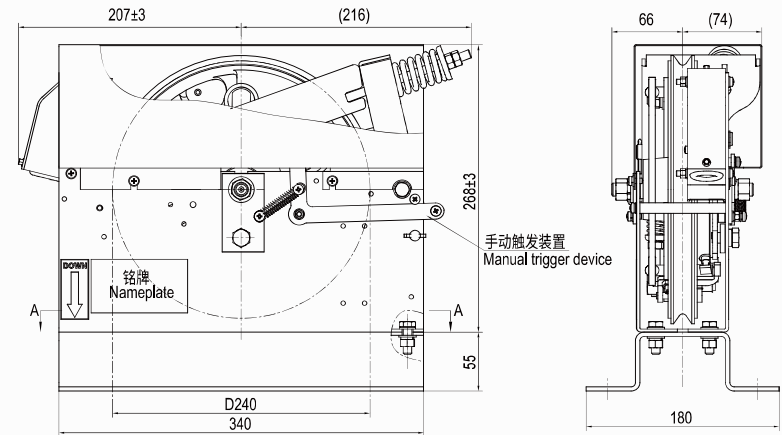
注：
双触点开关：上行动作，两组触点同时断开；下行动作，仅21/22触点断开。

Remark:
Double contact switch: upward action, two groups of contacts disconnect at the same time; Down action, only contact 21/22 is disconnected.

序号 No.	绳轮直径 Sheave Diameter (mm)	钢丝绳直径 Rope Diameter (mm)	额定速度 Rated Speed (m/s)	提拉力 Tensile Force T (N)	绳张紧力 Rope Tension Force F (N)	提升高度 Lifting Height (m)	开关 Switch	认证 Certifications
A01	200	6	≤1.0/1.5/ 1.6/1.75	800~1500	125~280	≤60	单触点 Single contact	GB/CE/EAC
					175~300	≤90		
A02	200	6	≤1.0/1.5/ 1.6/1.75	800~1500	125~280	≤60	双触点 Double contact	GB/CE/EAC
					175~300	≤90		

限速器
OVERSPEED GOVERNOR

LOG03

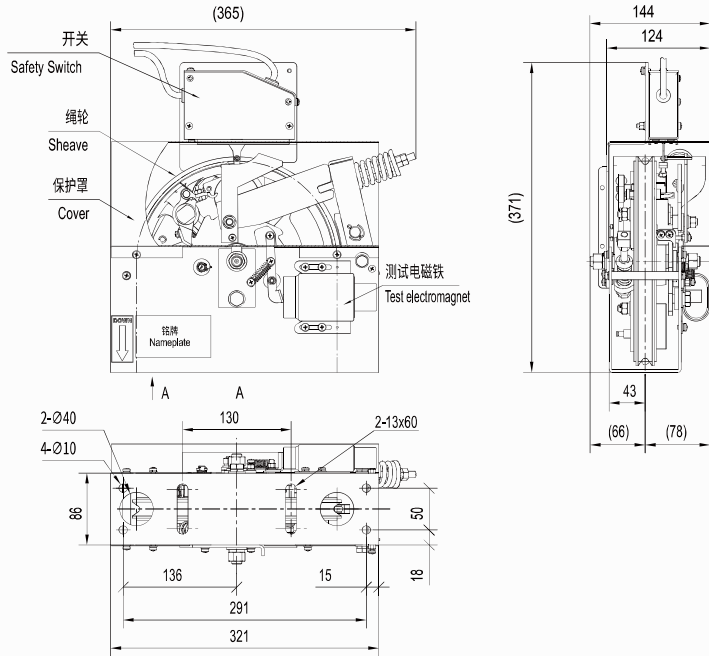


注：
双触点开关：上行动作，两组触点同时断开；下行动作，仅21/22触点断开。

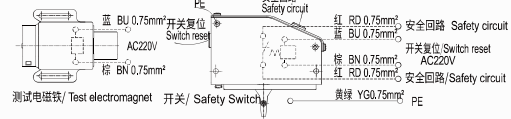
Remark:
Double contact switch: upward action, two groups of contacts disconnect at the same time; Down action, only contact 21/22 is disconnected.

序号 No.	绳轮直径 Sheave Diameter (mm)	钢丝绳直径 Rope Diameter (mm)	额定速度 Rated Speed (m/s)	提拉力 Tensile Force T (N)	绳张紧力 Rope Tension Force F (N)	提升高度 Lifting Height (m)	开关 Switch	认证 Certifications
B01	240	8/6	1.0/1.5/1.6/ 1.75/2.0/ 2.5/3.0	800~1500	125~280	≤80	单触点 Single contact	GB/CE/EAC
					175~300	≤125		
B02	240	8/6	1.0/1.5/1.6/ 1.75/2.0/ 2.5/3.0	800~1500	125~280	≤80	双触点 Double contact	GB/CE/EAC
					175~300	≤125		

限速器
OVERSPEED GOVERNOR
LOG03B



电路图/Circuit Diagram



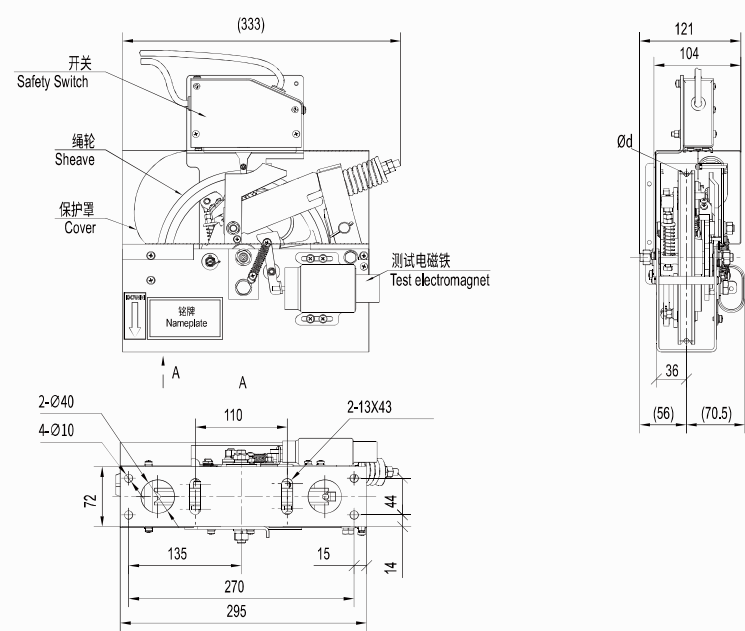
- 注:
1. 测试和复位功能: 可电器控制测试和开关复位, 机械动作后绳轮反方向转动1周, 可机械复位。
 2. 开关和电磁铁参数: 标配AC220V; 选配DC24V。
 3. 电磁铁保护: 电磁铁持续通电时间不得超过5分钟, 过热保护后, 间隔时间为30分钟后再使用。

Remark:

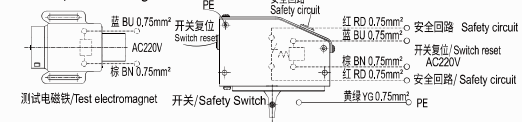
1. Test and reset function: Electrical control test and switch reset, mechanical action after the rope wheel rotation in the opposite direction for 1 week, mechanical reset.
2. Switch and electromagnet parameters: The standard AC220V; Equipped with DC24V.
3. Electromagnet protection: The electromagnet should not be powered on for more than 5 minutes. After overheating protection, the interval is 30 minutes before use.

序号 No.	绳轮直径 Sheave Diameter (mm)	钢丝绳直径 Rope Diameter (mm)	额定速度 Rated Speed (m/s)	提拉力 Tensile Force T (N)	绳张紧力 Rope Tension Force F (N)	提升高度 Lifting Height (m)	认证 Certifications
A01	240	φ8 (S)	1.0/1.5/1.6/	800~1500	125~280	≤80	GB/CE/EAC
		φ6 (O)	1.75/2.0/2.5/3.0		175~300	≤125	

限速器
OVERSPEED GOVERNOR
LOG03B



电路图/Circuit Diagram



注:

1. 测试和复位功能: 可电器控制测试和开关复位, 机械动作后绳轮反方向转动1周, 可机械复位。
2. 开关和电磁铁参数: 标配AC220V; 选配DC24V。

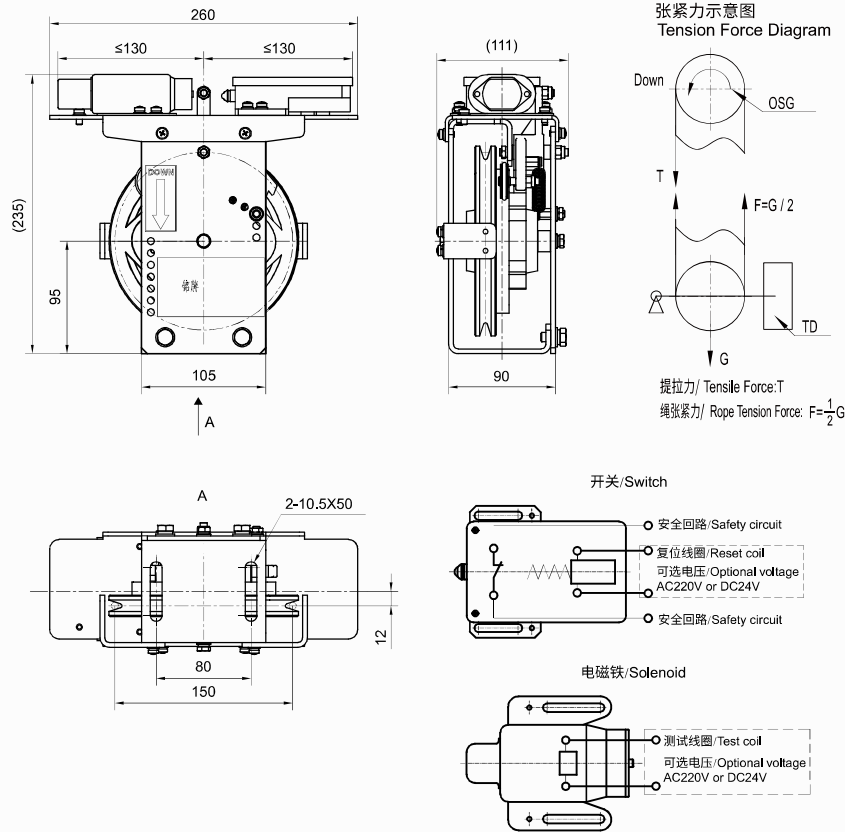
Remark:

1. Test and reset function: Electrical control test and switch reset, mechanical action after the rope wheel rotation in the opposite direction for 1 week, mechanical reset.
2. Switch and electromagnet parameters: The standard AC220V; Equipped with DC24V.

序号 No.	绳轮直径 Sheave Diameter (mm)	钢丝绳直径 Rope Diameter (mm)	额定速度 Rated Speed (m/s)	提拉力 Tensile Force T (N)	绳张紧力 Rope Tension Force F (N)	提升高度 Lifting Height (m)	认证 Certifications
B01	200	φ6	≤1.0/1.5	800~1500	125~280	≤60	GB/CE
			1.6/1.75		175~300	≤90	

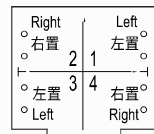
双向限速器
BI-DIRECTION OVERSPEED GOVERNOR

LOG06



注:
1. 开关和电磁铁电压: 标配 AC220V; 选配 DC24V。
2. 图示右置。

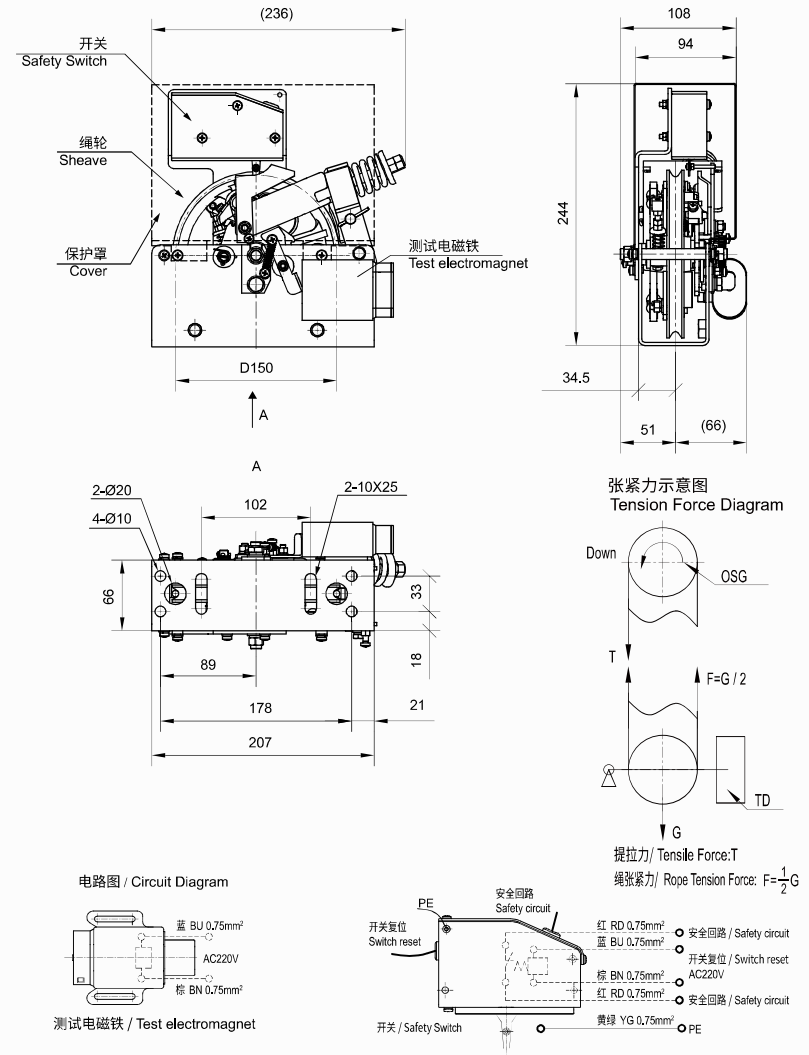
Remark:
1. Switch and solenoid Voltage: AC220V (optional DC24V).
2. Shows the right configuration.



序号 No.	绳轮直径 Sheave Diameter (mm)	钢丝绳直径 Rope Diameter (mm)	额定速度 Rated Speed (m/s)	提拉力 Tensile Force T (N)	绳张紧力 Rope Tension Force F (N)	提升高度 Lifting Height (m)	开关 Switch
A01	150	φ6	≤1.0	500~1000	150~250	≤20	单触点 Single Contact

限速器
OVERSPEED GOVERNOR

LOG07

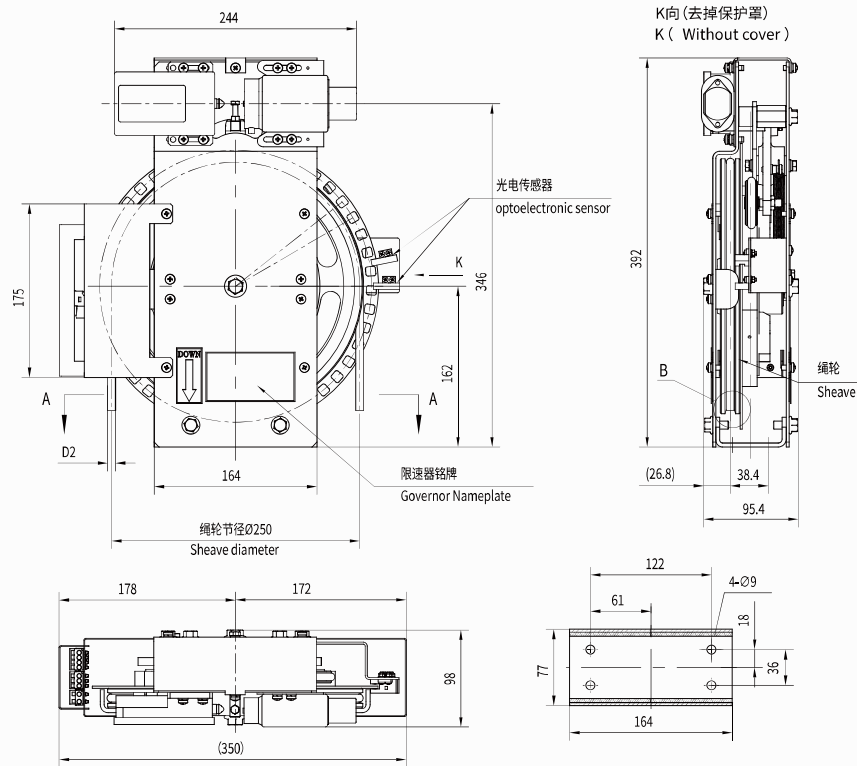


序号 No.	绳轮直径 Sheave Diameter (mm)	钢丝绳直径 Rope Diameter (mm)	额定速度 Rated Speed (m/s)	提拉力 Tensile Force T (N)	绳张紧力 Rope Tension Force F (N)	提升高度 Lifting Height (m)	开关 Switch
A01	150	φ6	≤1.0	500~1000	150~250	≤20	单触点 Single Contact

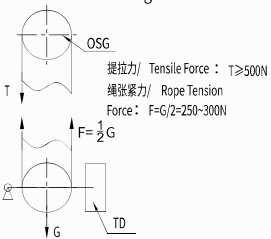
双向限速器

BI-DIRECTION OVERSPEED GOVERNOR

LOG09



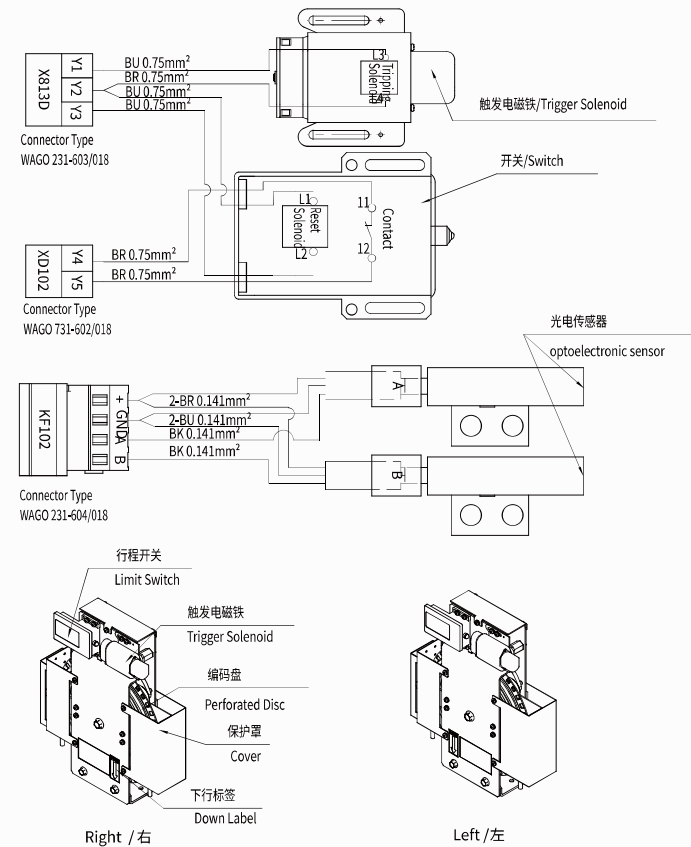
张紧力示意图
Tension Force Diagram



双向限速器

BI-DIRECTION OVERSPEED GOVERNOR

LOG09



注:

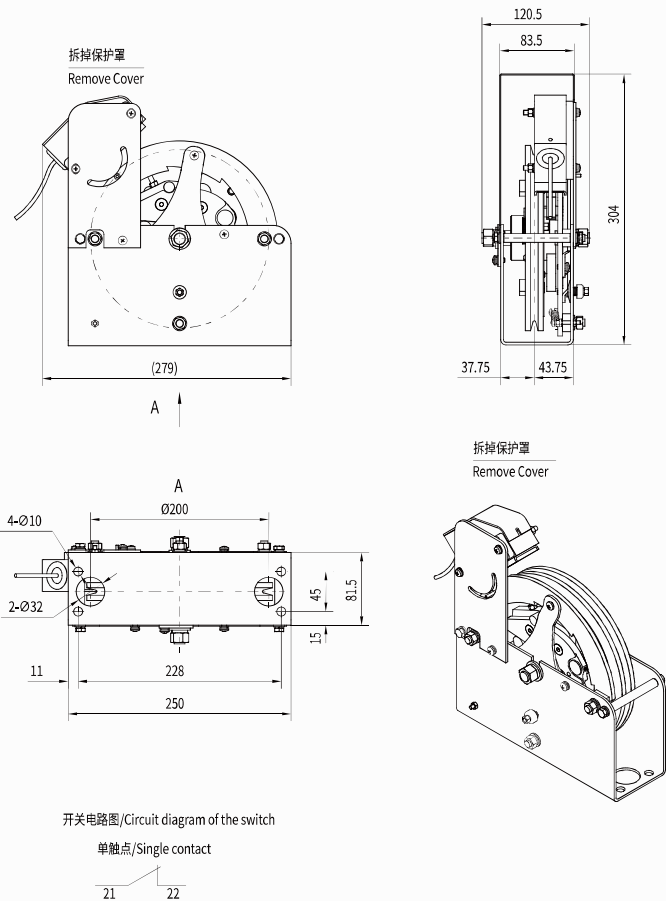
1. 开关和电磁铁电压: 标配 AC220V; 选配 DC24V.
2. 带光电传感器编码盘分辨率: 每米脉冲数 57.

Remark:

1. Switch and solenoid Voltage: AC220V (optional DC24V).
2. The resolution of encoding disc with optoelectronic sensor shall be 57 pulses per meter.

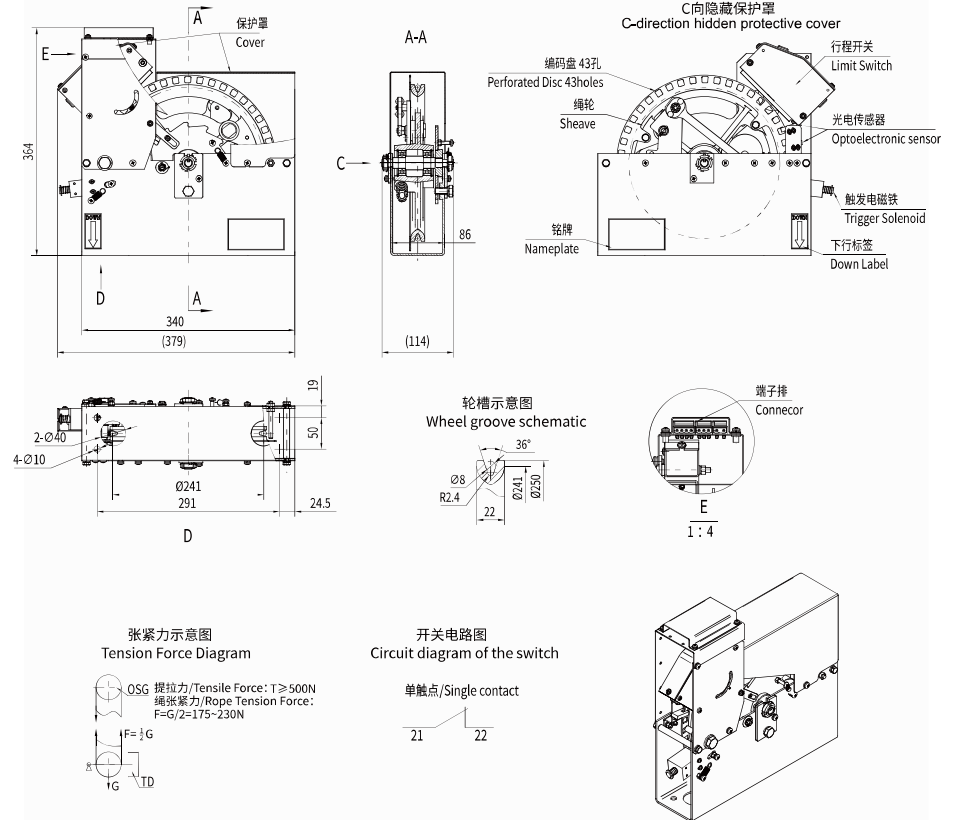
序号 No.	绳轮直径 Sheave Diameter (mm)	钢丝绳直径 Rope Diameter (mm)	额定速度 Rated Speed (m/s)	提拉力 Tensile Force T (N)	绳张紧力 Rope Tension Force F (N)	提升高度 Lifting Height (m)	开关 Switch	认证 Certifications
A01	200	φ6	1.0	500~1000	250~300	≤90	单触点 Single Contact	GB/CE
A02	200	φ6.5	1.0	500~1000	250~300	≤90	单触点 Single Contact	GB/CE
A03	250	φ8	1.5/1.6/ 1.75	500~1000	250~300	≤100	单触点 Single Contact	GB/CE

限速器
OVERSPEED GOVERNOR
LOG11



序号 No.	绳轮直径 Sheave Diameter (mm)	钢丝绳直径 Rope Diameter (mm)	额定速度 Rated Speed (m/s)	提拉力 Tensile Force T (N)	绳张紧力 Rope Tension Force F (N)	提升高度 Lifting Height (m)	开关 Switch	认证 Certification
A01	200	φ6	1.0/1.5/ 1.6/1.75	500~1000	250~300	≤90	单触点 Single Contact	GB

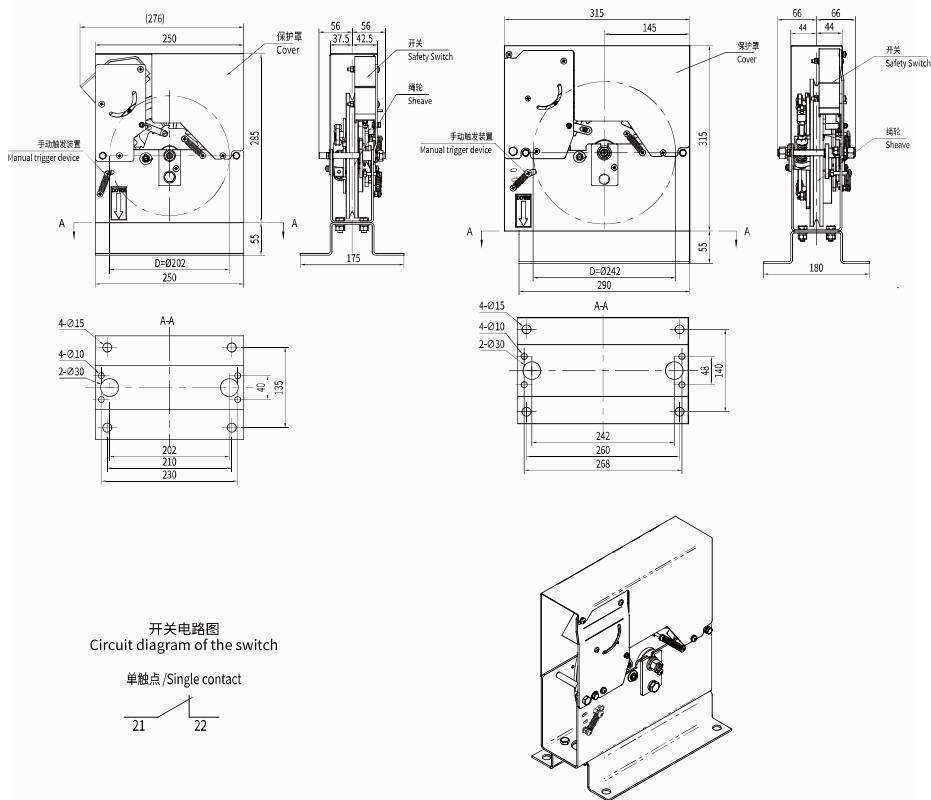
限速器
OVERSPEED GOVERNOR
LOG15



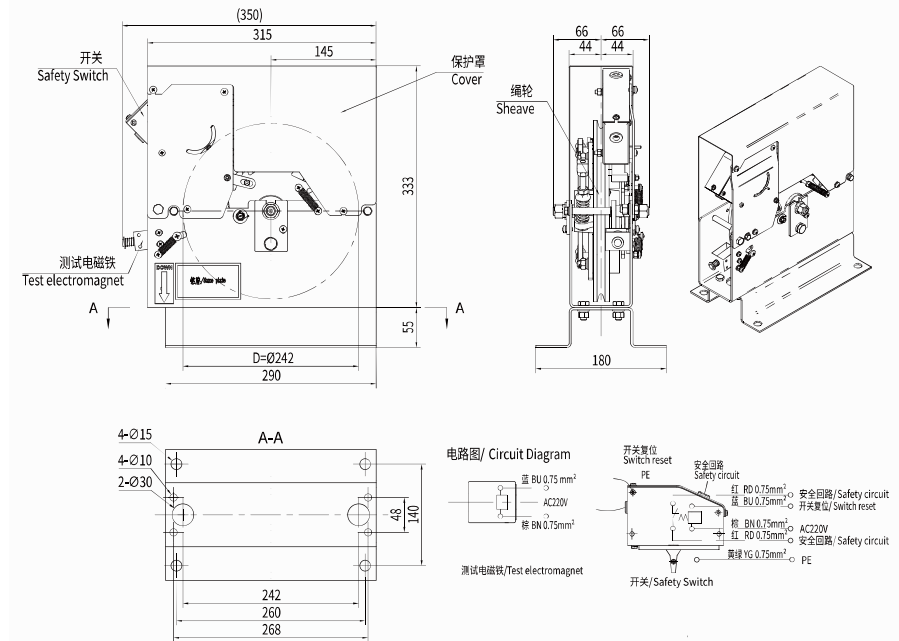
- 注:
1. 开关和电磁铁电压: 标配 AC220V; 选配 DC24V.
 2. 带光电传感器编码盘分辨率: 每米脉冲数 57.
- Remark:
1. Switch and solenoid Voltage: AC220V (optional DC24V).
 2. The resolution of encoding disc with photoelectric sensor shall be 57 pulses per meter.

序号 No.	绳轮直径 Sheave Diameter (mm)	钢丝绳直径 Rope Diameter (mm)	额定速度 Rated Speed (m/s)	提拉力 Tensile Force T (N)	绳张紧力 Rope Tension Force F (N)	提升高度 Lifting Height (m)	开关 Switch	认证 Certification
A01	241	φ8	1.0/1.5/1.6/ 1.75/2.0/ 2.5/3.0	500~1000	175~230	≤125	单触点 Single Contact	GB

限速器
OVERSPEED GOVERNOR
LOG16



限速器
OVERSPEED GOVERNOR
LOG16B



注:

1. 测试和复位功能: 可电器控制测试和开关复位, 机械动作后绳轮反方向转动1周, 可机械复位。
2. 开关和电磁铁参数: 标配AC220V; 选配DC24V
3. 电磁铁保护: 电磁铁持续通电时间不得超过5分钟, 过热保护后, 间隔时间为30分钟后在使用。

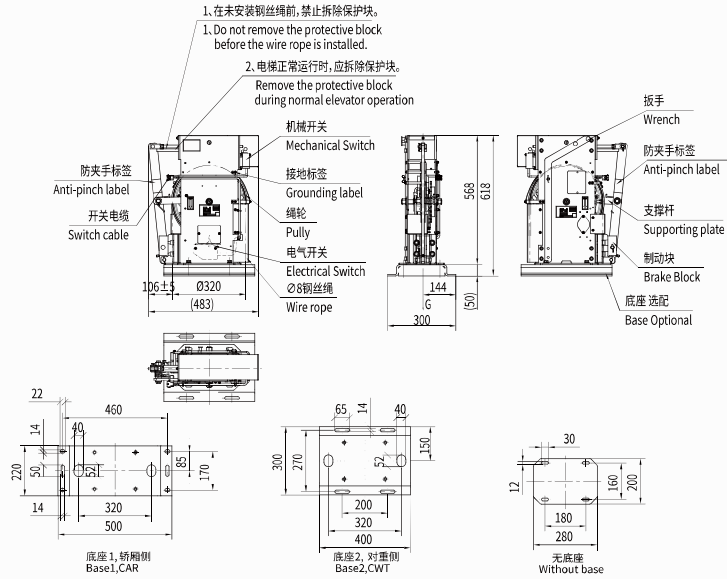
Remark:

1. Test and reset function: Electrical control test and switch reset, mechanical action after the rope wheel rotation in the opposite direction for 1 week, mechanical reset.
2. Switch and electromagnet parameters: The standard AC220V; Equipped with DC24V
3. Electromagnet protection: The electromagnet should not be powered on for more than 5 minutes. After overheating protection, the interval is 30 minutes before use.

序号 No.	绳轮直径 Sheave Diameter (mm)	钢丝绳直径 Rope Diameter (mm)	额定速度 Rated Speed (m/s)	提拉力 Tensile Force T (N)	绳张紧力 Rope Tension Force F (N)	提升高度 Lifting Height (m)	开关 Switch	认证 Certification
A01	202	φ6	≤1.75	500~1000	175~230	≤90	单触点 Single Contact	GB
A02	242	φ8	≤2.5	500~1000	175~230	≤125	单触点 Single Contact	GB

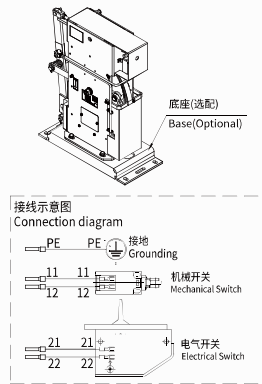
序号 No.	绳轮直径 Sheave Diameter (mm)	钢丝绳直径 Rope Diameter (mm)	额定速度 Rated Speed (m/s)	提拉力 Tensile Force T (N)	绳张紧力 Rope Tension Force F (N)	提升高度 Lifting Height (m)	开关 Switch	认证 Certification
A01	242	φ8	≤2.5	500~1000	175~230	≤125	单触点 Single Contact	GB

限速器
OVERSPEED GOVERNOR
LOG20

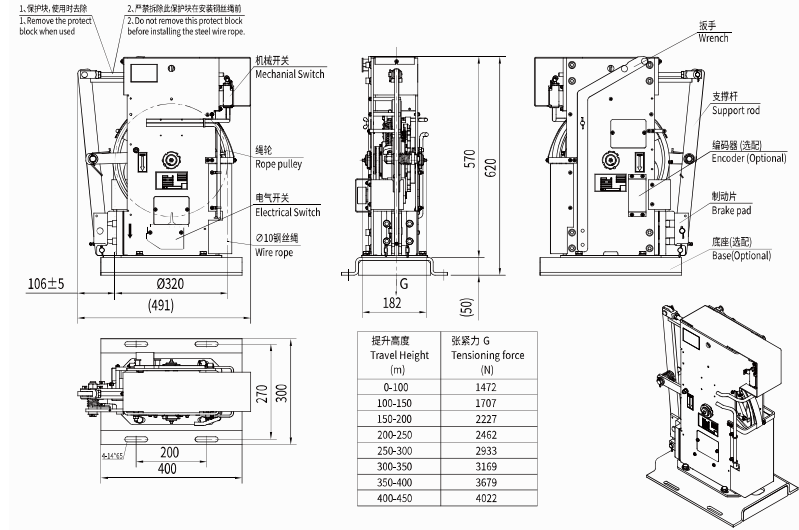


配套张紧参数表
Parameter of Tension Device

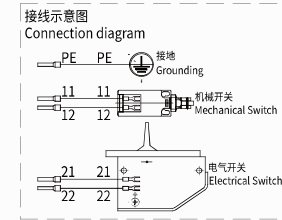
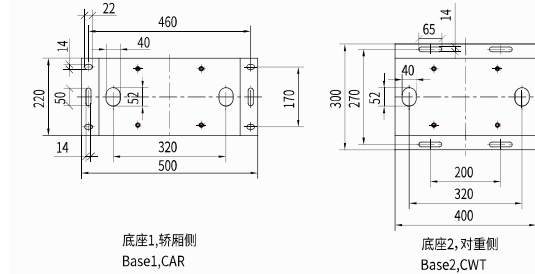
额定速度 Rated Speed	张紧力G Tensioning force			
	提升高度 Travel Height	100~150m	150~200m	200~250m
1.0 m/s	0~100m	490N	735N	/
1.5 m/s	100~150m	490N	735N	/
1.6 m/s	150~200m	490N	735N	/
1.75 m/s	200~250m	490N	735N	/
2.0 m/s	250~300m	490N	735N	/
2.5 m/s	300~350m	490N	980N	980N
3.0 m/s	350~400m	490N	980N	980N
3.5 m/s	400~450m	490N	1225N	1720N
4.0 m/s		735N	1470N	1720N
5.0 m/s		735N	1900N	
6.0 m/s				



限速器
OVERSPEED GOVERNOR
LOG21



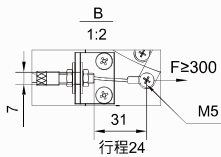
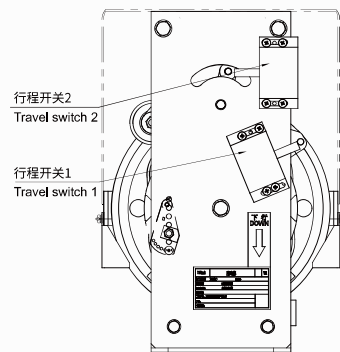
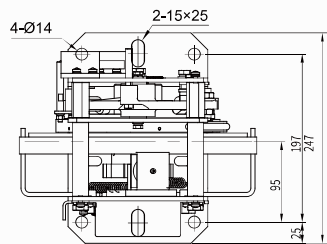
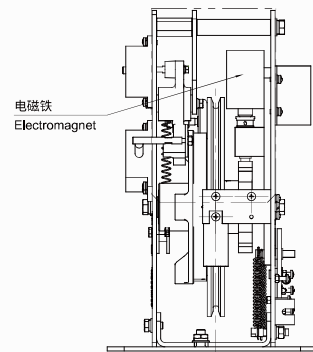
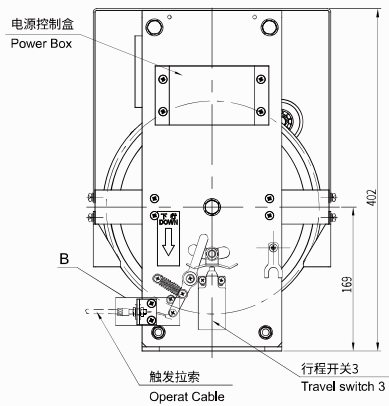
提升高度 Travel Height (m)	张紧力 G Tensioning force (N)
0-100	1472
100-150	1707
150-200	2227
200-250	2462
250-300	2933
300-350	3169
350-400	3679
400-450	4022



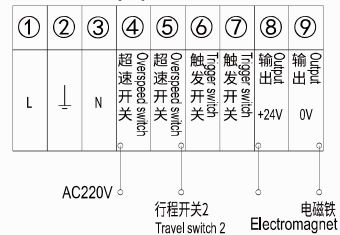
序号 No.	绳轮直径 Sheave Diameter (mm)	钢丝绳直径 Rope Diameter (mm)	额定速度 Rated Speed (m/s)	提拉力 Tensile Force T (N)	提升高度 Lifting Height (m)	编码器 Encoder	认证 Certification
A01	φ320	φ10	5.0/6.0/7.0/8.0/9.0/10.0	1900~2300	≤450	无/No	GB / CE
A02	φ320	φ10	5.0/6.0/7.0/8.0/9.0/10.0	1900~2300	≤450	有/Yes	GB / CE

限速器
OVERSPEED GOVERNOR

LUC03



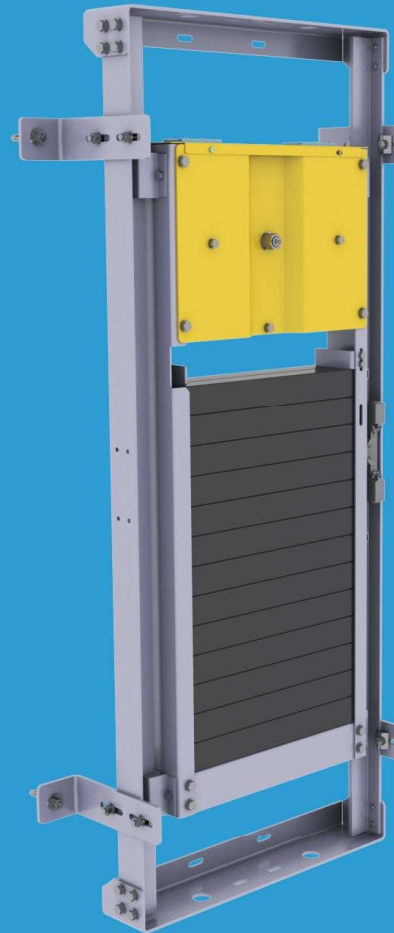
接线示意图 Wiring diagram



注：
行程开关1和3 接安全回路。

Remark:
Travel switches 1 and 3 are connected to safety circuit.

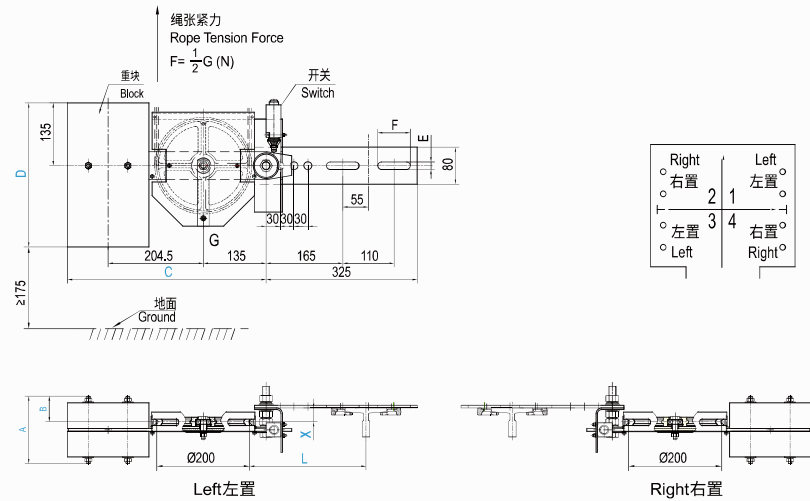
序号 No.	绳轮直径 Sheave Diameter (mm)	钢丝绳直径 Rope Diameter (mm)	额定速度 Rated Speed (m/s)	提拉力 Tensile Force T (N)	绳张紧力 Rope Tension Force F (N)	提升高度 Lifting Height (m)	认证 Certifications
A01	250	φ8	≤1.0/1.5/1.6/1.75	800~1500	280~350	≤60	GB



张紧装置
Tension Device

张紧装置
TENSION DEVICE

LTD01

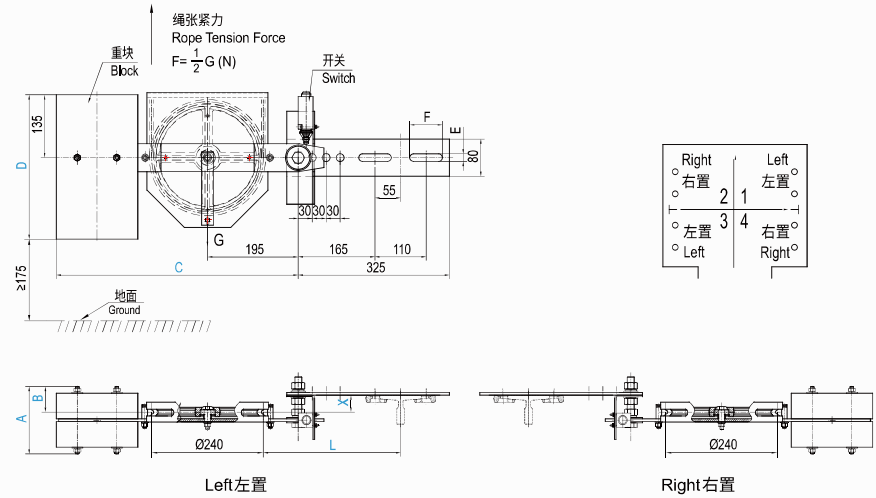


导轨型号 Guide Rail Type	T75	T89	T90	T114	T127
L (mm)	150-270	145-275	145-275	165-270	170-270
X (mm)	24-50				

序号 No.	钢丝绳直径 Rope Diameter (mm)	A (mm)	B (mm)	C (mm)	D (mm)	重锤材质 Block Materials	绳张紧力 Rope Tension Force F (N)	2-E×F (mm)
A01	φ6	155	60	380	300	复合 CM	175	12.5×70
A02	φ6	95	30	370	300	钢板 SP	175	
A03	φ6	145	55	417	300	复合 CM	225	
A04	φ6	85	25	417	300	钢板 SP	225	
A05	φ6	165	65	427	310	复合 CM	280	
A06	φ6	95	30	427	310	钢板 SP	280	
A07	φ6	155	60	380	300	复合 CM	175	17×70
A08	φ6	95	30	370	300	钢板 SP	175	
A09	φ6	145	55	417	300	复合 CM	225	
A10	φ6	85	25	417	300	钢板 SP	225	
A11	φ6	165	65	427	310	复合 CM	280	
A12	φ6	95	30	427	310	钢板 SP	280	

张紧装置
TENSION DEVICE

LTD01

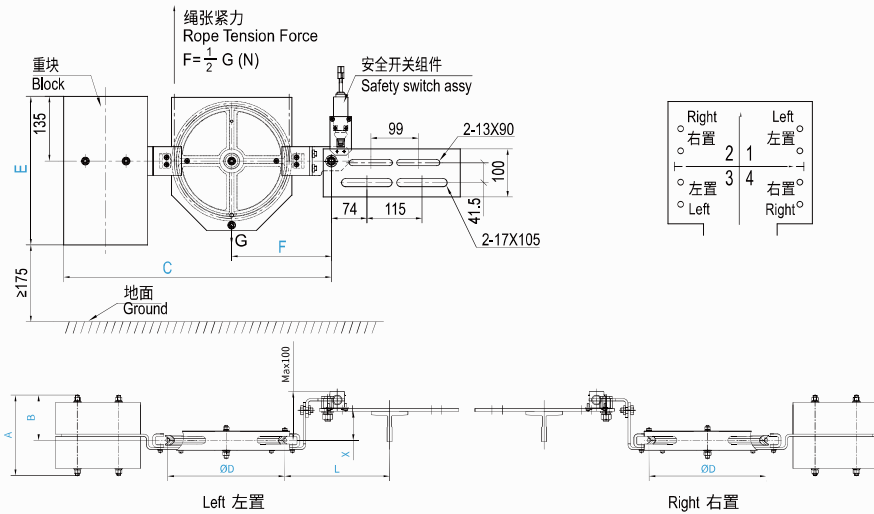


导轨型号 Guide Rail Type	T75	T89	T90	T114	T127
L (mm)	195-305	190-310	190-310	215-315	215-310
X (mm)	24-50				

序号 No.	钢丝绳直径 Rope Diameter (mm)	A (mm)	B (mm)	C (mm)	D (mm)	重锤材质 Block Materials	绳张紧力 Rope Tension Force F (N)	2-E×F (mm)
B01	φ8	155	60	510	300	复合 CM	175	12.5×70
B02	φ8	95	30	500	300	钢板 SP	175	
B03	φ8	145	55	510	300	复合 CM	225	
B04	φ8	85	25	510	300	钢板 SP	225	
B05	φ8	165	65	520	310	复合 CM	280	
B06	φ8	95	30	520	310	钢板 SP	280	
B07	φ8	155	60	510	300	复合 CM	175	17×70
B08	φ8	95	30	500	300	钢板 SP	175	
B09	φ8	145	55	510	300	复合 CM	225	
B10	φ8	85	25	510	300	钢板 SP	225	
B11	φ8	165	65	520	310	复合 CM	280	
B12	φ8	95	30	520	310	钢板 SP	280	

张紧装置
TENSION DEVICE

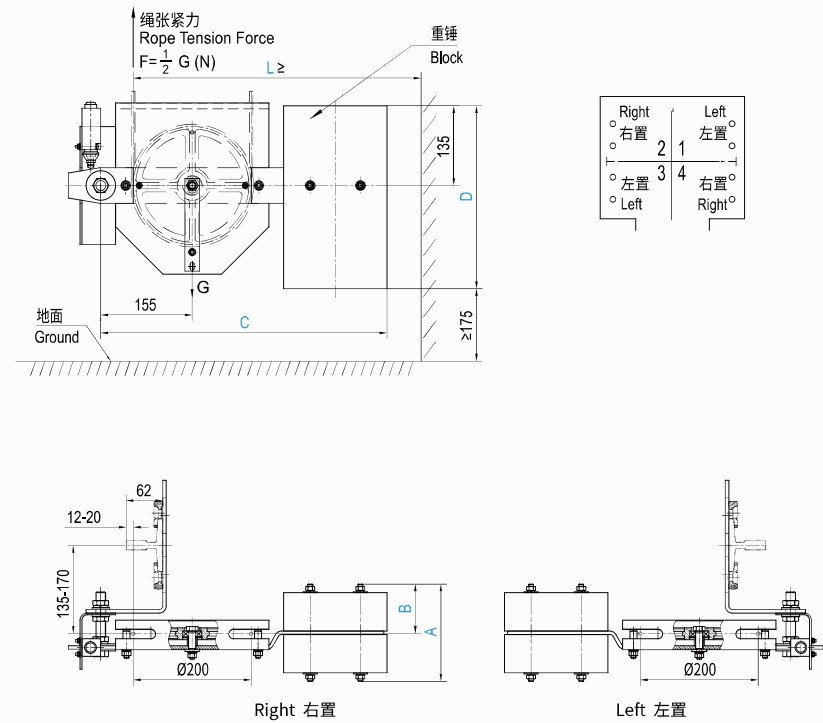
LTD01



导轨型号 Guide Rail		T75 / T89	T82 / T89-2	T90	T114 / T127				
L (mm)		190-250	190-250	190-250	190-250				
X (mm)		4-65	10-71	17-78	31-92				
序号 No.	钢丝绳直径 Rope Diameter (mm)	A (mm)	B (mm)	C (mm)	D (mm)	E (mm)	F (mm)	重锤材质 Block Materials	绳张紧力 Rope Tension Force F (N)
C01	φ6	155	87.5	510	200	300	187	复合 CM	175
C02	φ6	95	57.5	500	200	300	187	钢板 SP	175
C03	φ6	145	82.5	510	200	300	187	复合 CM	225
C04	φ6	85	52.5	510	200	300	187	钢板 SP	225
C05	φ6	165	92.5	520	200	300	187	复合 CM	280
C06	φ6	95	57.5	520	200	300	187	钢板 SP	280
C07	φ8	155	60	510	240	300	208	复合 CM	175
C08	φ8	95	30	500	240	300	208	钢板 SP	175
C09	φ8	145	55	510	240	300	208	复合 CM	225
C10	φ8	85	25	510	240	300	208	钢板 SP	225
C11	φ8	165	65	520	240	300	208	复合 CM	280
C12	φ8	95	30	520	240	300	208	钢板 SP	280
C13	φ8	165	65	520	240	310	213	复合 CM	280
C14	φ8	95	30	520	240	310	213	钢板 SP	280

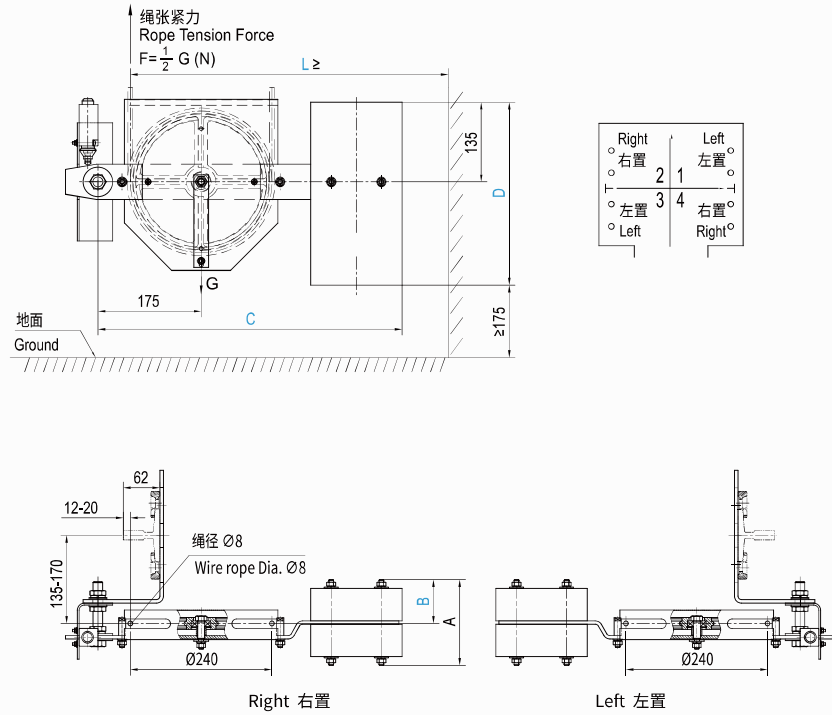
张紧装置
TENSION DEVICE

LTD02



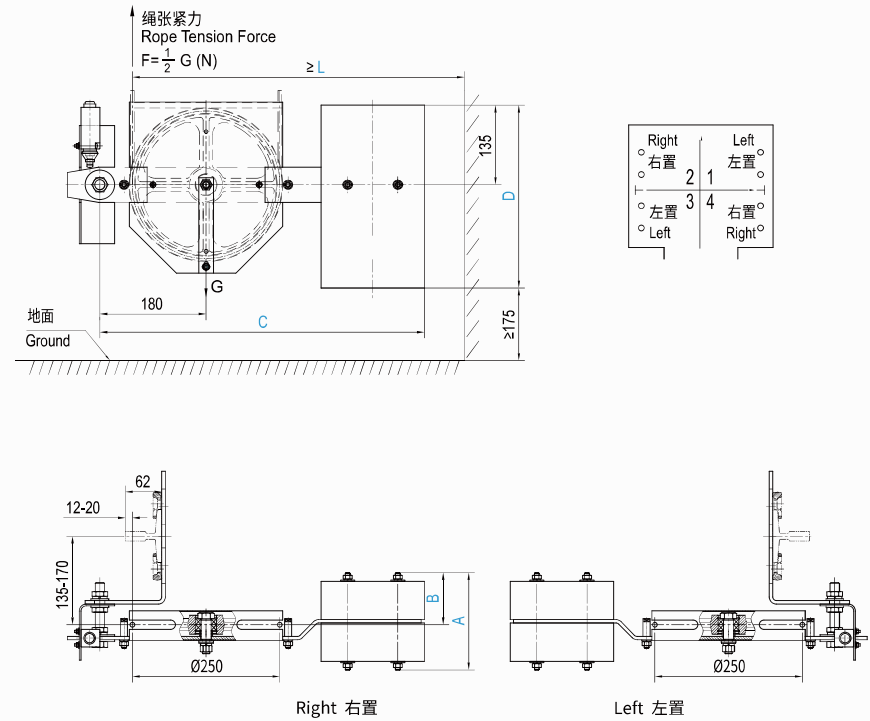
序号 No.	绳轮直径 Pulley Diameter (mm)	钢丝绳直径 Rope Diameter (mm)	A (mm)	B (mm)	C (mm)	D (mm)	L (mm)	重锤材质 Block Materials	绳张紧力 Rope Tension Force F (N)
A01	200	φ6	155	79	435	300	≥450	复合 CM	175
A02	200	φ6	95	54	420	300	≥440	钢板 SP	175
A03	200	φ6	145	74	485	300	≥485	复合 CM	225
A04	200	φ6	85	49	475	300	≥475	钢板 SP	225
A05	200	φ6	165	84	485	310	≥485	复合 CM	300
A06	200	φ6	95	54	485	310	≥485	钢板 SP	300
A07	200	φ6	155	79	400	310	≥410	钢板 SP	300

LTD02



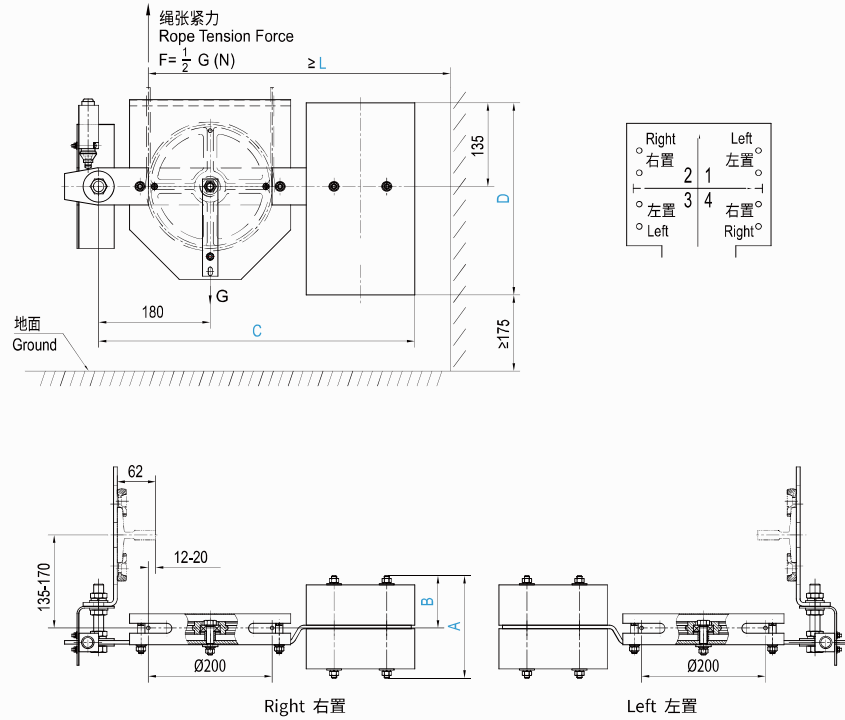
序号 No.	绳轮直径 Pulley Diameter (mm)	钢丝绳直径 Rope Diameter (mm)	A (mm)	B (mm)	C (mm)	D (mm)	L (mm)	重锤材质 Block Materials	绳张紧力 Rope Tension Force F (N)
B01	240	$\phi 8$	155	79	430	300	≥ 490	复合 CM	175
B02	240	$\phi 8$	95	54	420	300	≥ 480	钢板 SP	175
B03	240	$\phi 8$	145	74	485	300	≥ 520	复合 CM	225
B04	240	$\phi 8$	85	49	475	300	≥ 510	钢板 SP	225
B05	240	$\phi 8$	165	84	485	310	≥ 520	复合 CM	300
B06	240	$\phi 8$	95	54	485	310	≥ 520	钢板 SP	300

LTD02



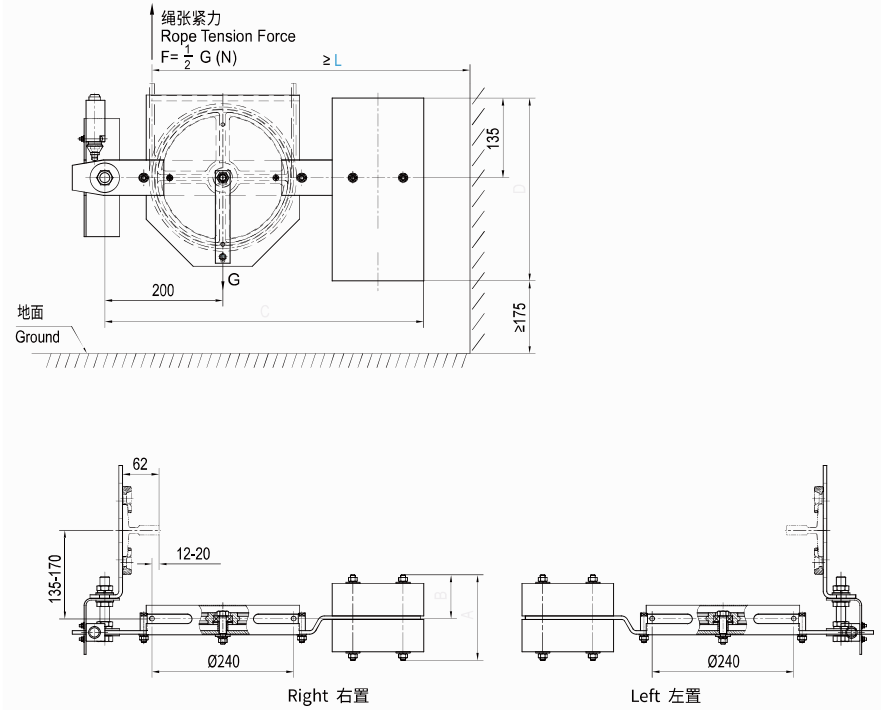
序号 No.	绳轮直径 Pulley Diameter (mm)	钢丝绳直径 Rope Diameter (mm)	A (mm)	B (mm)	C (mm)	D (mm)	L (mm)	重锤材质 Block Materials	绳张紧力 Rope Tension Force F (N)
C01	250	$\phi 8$	165	88	550	310	≥ 560	复合 CM	300
C02	250	$\phi 8$	95	53	550	310	≥ 560	钢板 SP	300
C03	250	$\phi 8$	155	83	465	300	≥ 480	钢板 SP	300

LTD02



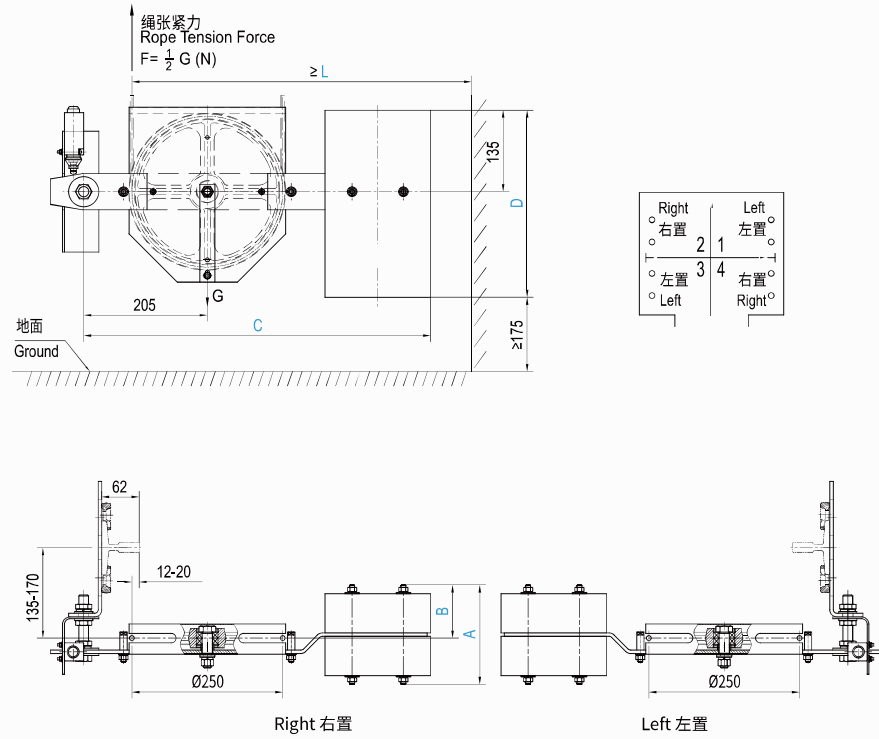
序号 No.	绳轮直径 Pulley Diameter (mm)	钢丝绳直径 Rope Diameter (mm)	A (mm)	B (mm)	C (mm)	D (mm)	L (mm)	重锤材质 Block Materials	绳张紧力 Rope Tension Force F (N)
D01	200	φ6	155	79	430	300	≥460	复合 CM	175
D02	200	φ6	95	54	420	300	≥450	钢板 SP	175
D03	200	φ6	145	74	485	300	≥485	复合 CM	225
D04	200	φ6	85	49	475	300	≥475	钢板 SP	225
D05	200	φ6	165	84	485	310	≥485	复合 CM	300
D06	200	φ6	95	54	485	310	≥485	钢板 SP	300

LTD02



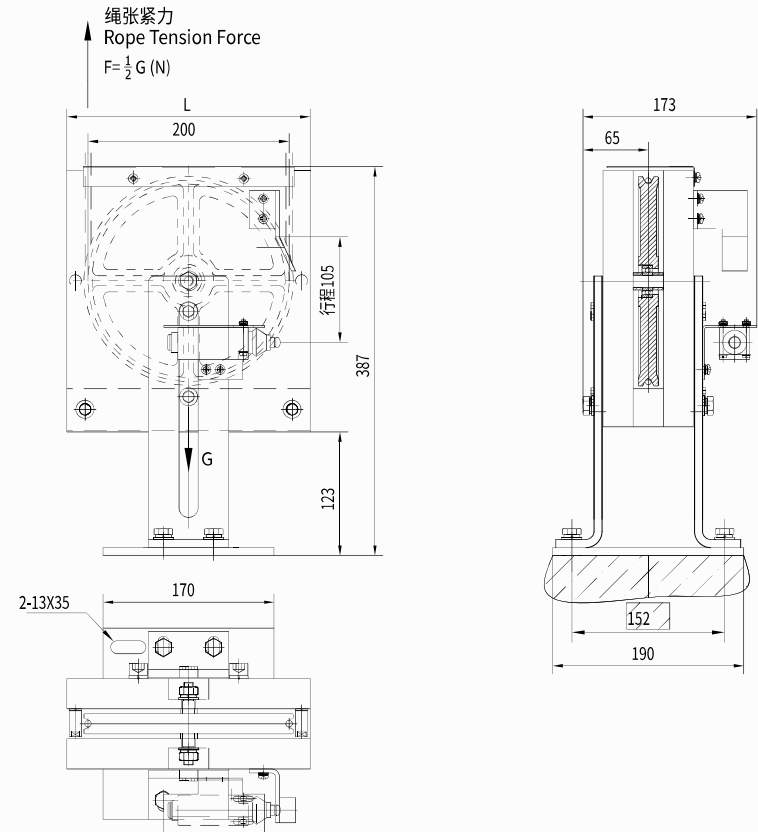
序号 No.	绳轮直径 Pulley Diameter (mm)	钢丝绳直径 Rope Diameter (mm)	A (mm)	B (mm)	C (mm)	D (mm)	L (mm)	重锤材质 Block Materials	绳张紧力 Rope Tension Force F (N)
E01	240	φ8	155	79	430	300	≥460	复合 CM	175
E02	240	φ8	95	54	420	300	≥450	钢板 SP	175
E03	240	φ8	145	74	485	300	≥485	复合 CM	225
E04	240	φ8	85	49	475	300	≥475	钢板 SP	225
E05	240	φ8	165	84	485	310	≥485	复合 CM	300
E06	240	φ8	95	54	485	310	≥485	钢板 SP	300

LTD02



序号 No.	绳轮直径 Pulley Diameter (mm)	钢丝绳直径 Rope Diameter (mm)	A (mm)	B (mm)	C (mm)	D (mm)	L (mm)	重锤材质 Block Materials	绳张紧力 Rope Tension Force F (N)
F01	250	φ8	165	88	575	310	≥560	复合 CM	300
F02	250	φ8	95	53	575	310	≥560	钢板 SP	300

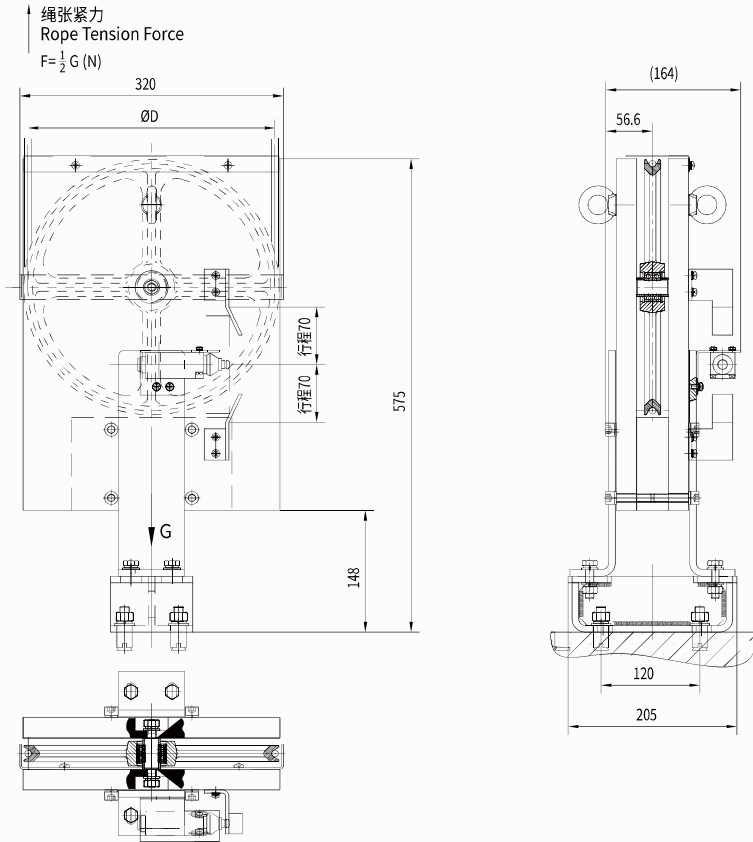
LTD03



序号 No.	绳轮直径 Pulley Diameter (mm)	钢丝绳直径 Rope Diameter (mm)	L (mm)	重锤材质 Block Materials	绳张紧力 Rope Tension Force F (N)
A01	200	φ6	242	钢板 SP	175
A02	200	φ6	310	钢板 SP	225

张紧装置
TENSION DEVICE

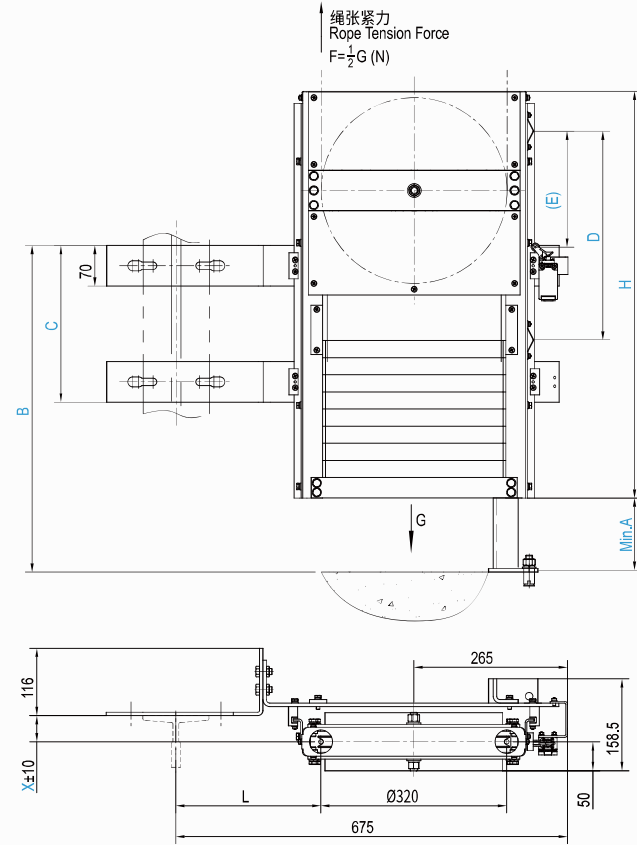
LTD03



序号 No.	绳轮直径 Pulley Diameter (mm)	钢丝绳直径 Rope Diameter (mm)	重锤材质 Block Materials	绳张紧力 Rope Tension Force F (N)
B01	250	φ8	钢板 SP	280
B02	300	φ8	钢板 SP	280

张紧装置
TENSION DEVICE

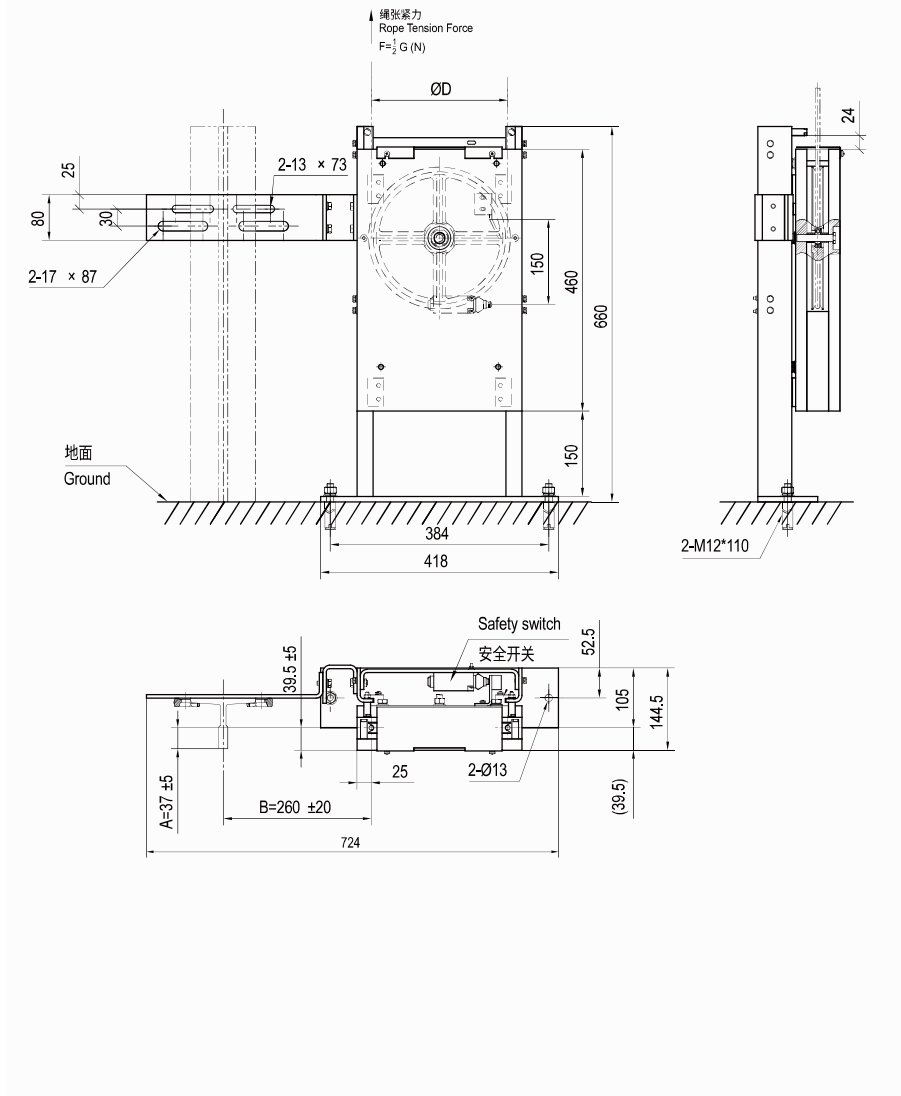
LTD05



序号 No.	钢丝绳直径 Rope Diameter (mm)	A (mm)	B (mm)	C (mm)	D (mm)	(E) (mm)	H (mm)	L (mm)	X (mm)	重锤材质 Block Materials	绳张紧力 Rope Tension Force F (N)
A01	φ8	200	635	270	360	200	700	250	35	钢板 SP	245
A02	φ8	200	635	270	360	200	700	250	35	钢板 SP	370
A03	φ8	230	805	320	410	230	1100	250	35	钢板 SP	490
A04	φ8	230	805	320	410	230	1100	250	35	钢板 SP	610
A05	φ8	230	805	320	410	230	1100	250	35	钢板 SP	860
A06	φ8	230	805	320	410	230	1100	250	35	钢板 SP	950

张紧装置
TENSION DEVICE

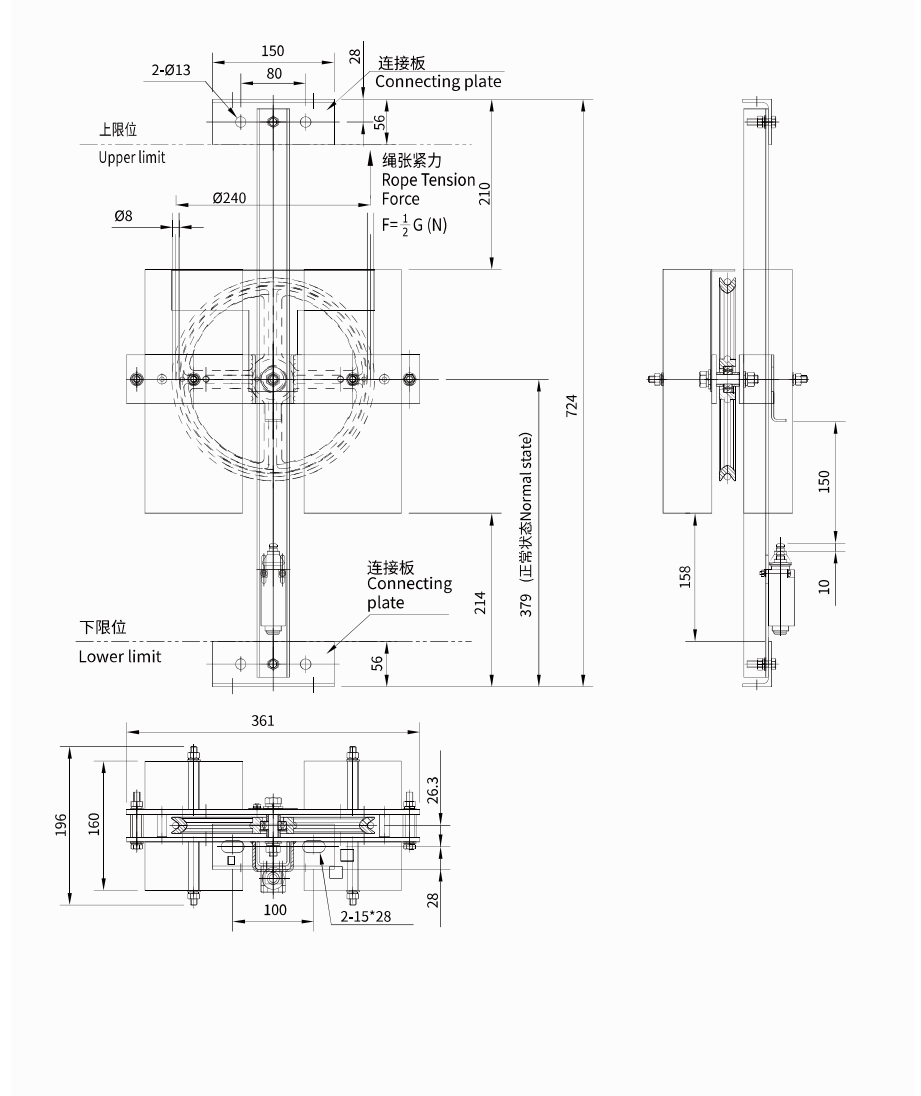
LTD05



序号 No.	绳轮直径 Pulley Diameter (mm)	钢丝绳直径 Rope Diameter (mm)	重锤材质 Block Materials	绳张紧力 Rope Tension Force F (N)
B01	240	φ8	钢板 SP	300

张紧装置
TENSION DEVICE

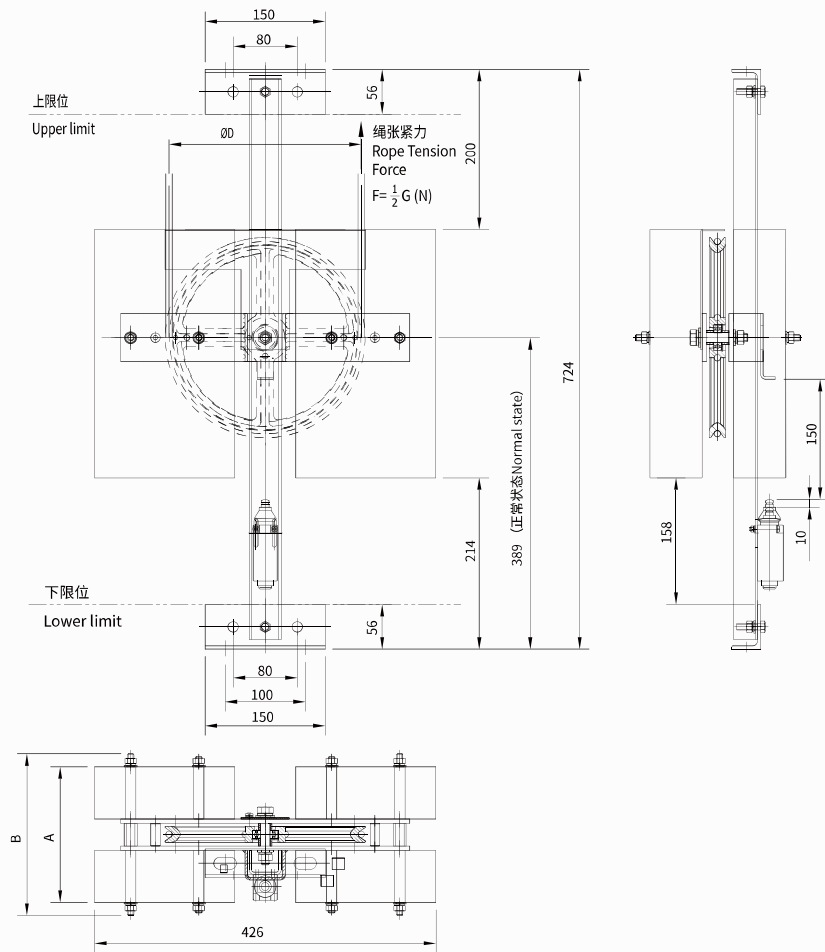
LTD06



序号 No.	绳轮直径 Pulley Diameter (mm)	钢丝绳直径 Rope Diameter (mm)	重锤材质 Block Materials	绳张紧力 Rope Tension Force F (N)
A01	240	φ8	复合 CM	150

张紧装置
TENSION DEVICE

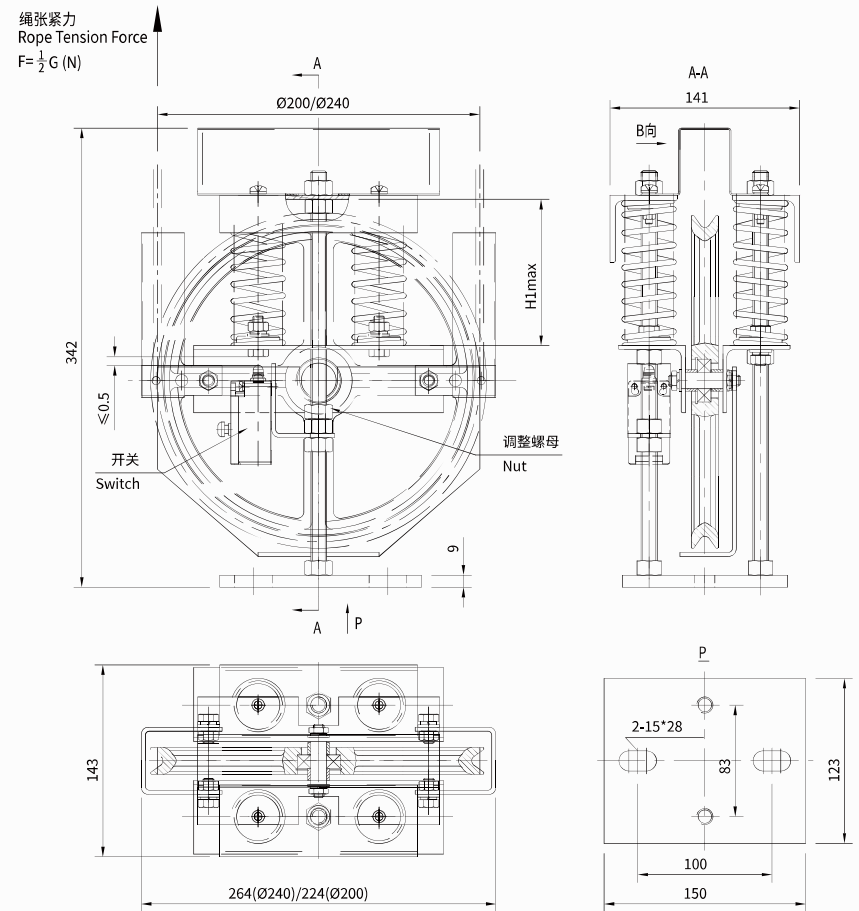
LTD06



序号 No.	绳轮直径 Pulley Diameter (mm)	钢丝绳直径 Rope Diameter (mm)	A (mm)	B (mm)	重锤材质 Block Materials	绳张力 Rope Tension Force F (N)
B01	200	φ6	170	202	复合 CM	250
B02	240	φ8	170	202	复合 CM	250
B03	250	φ8	194	226	复合 CM	250
B04	300	φ8	194	226	复合 CM	250

张紧装置
TENSION DEVICE

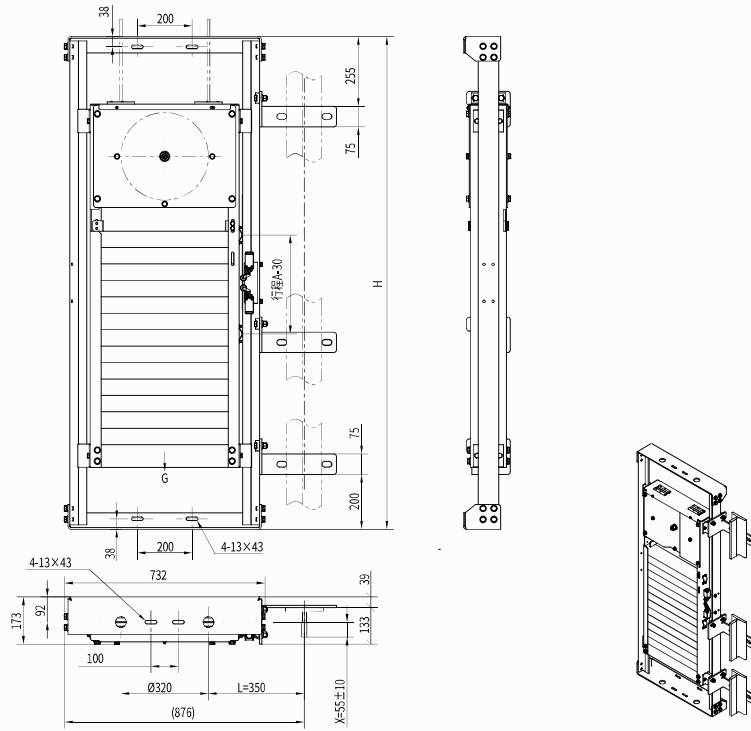
LTD07



序号 No.	绳轮直径 Pulley Diameter (mm)	钢丝绳直径 Rope Diameter (mm)	H1 (mm)	绳张力 Rope Tension Force F (N)
A01	200	φ6	80-97	290-500
A02	240	φ8	80-106	163-500

张紧装置
TENSION DEVICE

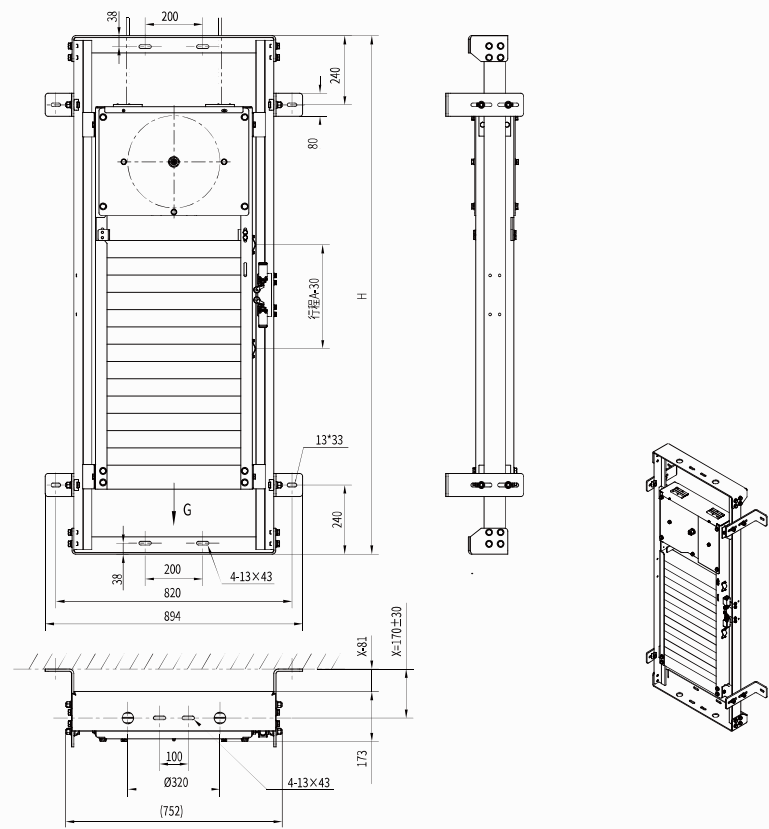
LTD08



序号 No.	提升高度 Travel Height (m)	行程 A Stroke A (mm)	悬挂总重量 G Total Weight G (kg)	张紧装置总高 Device Height H (mm)	导轨安装孔 Mounting hole of rails H (mm)	开关认证 Switch Certification
A01	0-170	326	182	1255	T114~T127 (2-17X32)	UL / CE
A02	170-240	391	243	1560		
A03	240-310	391	301	1560		
A04	310-380	391	362	1800		
A05	380-450	391	420	1800		
A06	0-170	326	182	1255	T140 (2-21X36)	UL / CE
A07	170-240	391	243	1560		
A08	240-310	391	301	1560		
A09	310-380	391	362	1800		
A10	380-450	391	420	1800		

张紧装置
TENSION DEVICE

LTD08



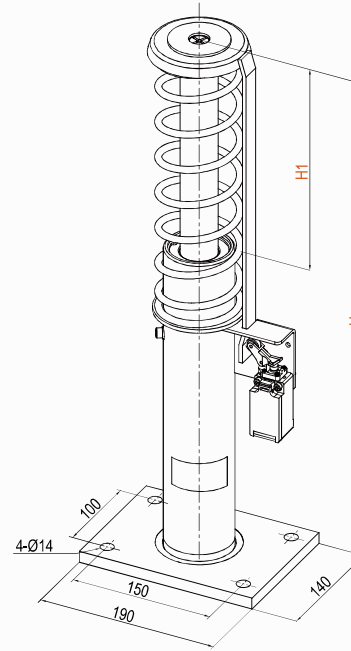
序号 No.	提升高度 Travel Height (m)	行程 A Stroke A (mm)	悬挂总重量 G Total Weight G (kg)	张紧装置总高 Device Height H (mm)	开关认证 Switch Certification
B01	0-170	326	182	1255	UL / CE
B02	170-240	391	243	1560	
B03	240-310	391	301	1560	
B04	310-380	391	362	1800	
B05	380-450	391	420	1800	



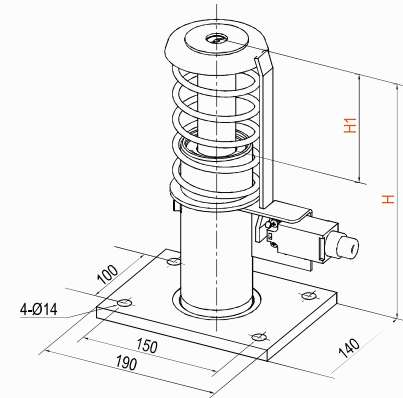
缓冲器
Oil Buffer

油压缓冲器
OIL BUFFER

LHB-D Series



LHB150D / LHB160D / LHB175D
LHB200D / LHB250D

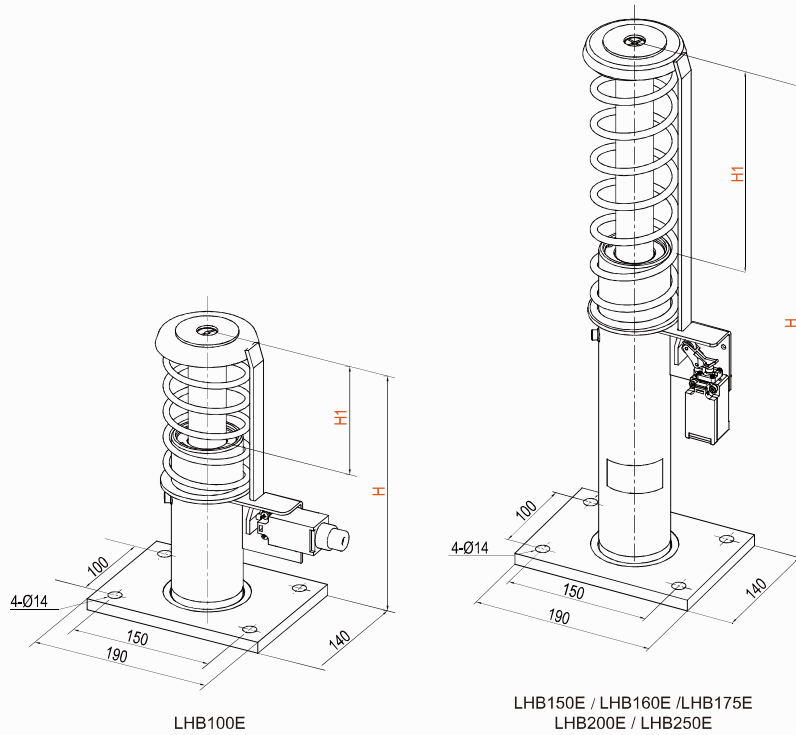


LHB100D

型号 Type	额定速度 Rated Speed (m/s)	撞击速度 Impact Speed (m/s)	自然高度 Free Height H(mm)	行程 Stroke H1(mm)	允许质量 Permitted P+Q(kg)	认证 Certifications
LHB100D	≤1.0	≤1.15	300	80	600~3000	GB
LHB150D	≤1.5	≤1.72	500	160		
LHB160D	≤1.6	≤1.84	536	175		
LHB175D	≤1.75	≤2.01	600	210		
LHB200D	≤2.0	≤2.30	780	275		
LHB250D	≤2.5	≤2.88	1125	425		

油压缓冲器
OIL BUFFER

LHB-E Series



型号 Type	额定速度 Rated Speed (m/s)	撞击速度 Impact Speed (m/s)	自然高度 Free Height H(mm)	行程 Stroke H1(mm)	允许质量 Permitted P+Q(kg)	认证 Certifications
LHB100E	≤1.0	≤1.15	300	80	600~4600	GB
LHB150E	≤1.5	≤1.72	500	160		
LHB160E	≤1.6	≤1.84	536	175		
LHB175E	≤1.75	≤2.01	600	210		
LHB200E	≤2.0	≤2.30	780	275		
LHB250E	≤2.5	≤2.88	1125	425		



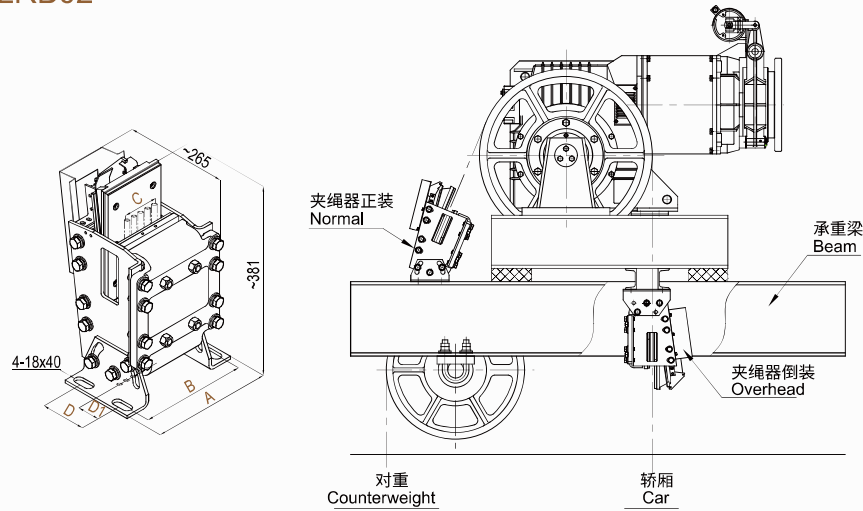
夹绳器

Rope Brake



UCMP

夹绳器
ROPE BRAKE
LRB02

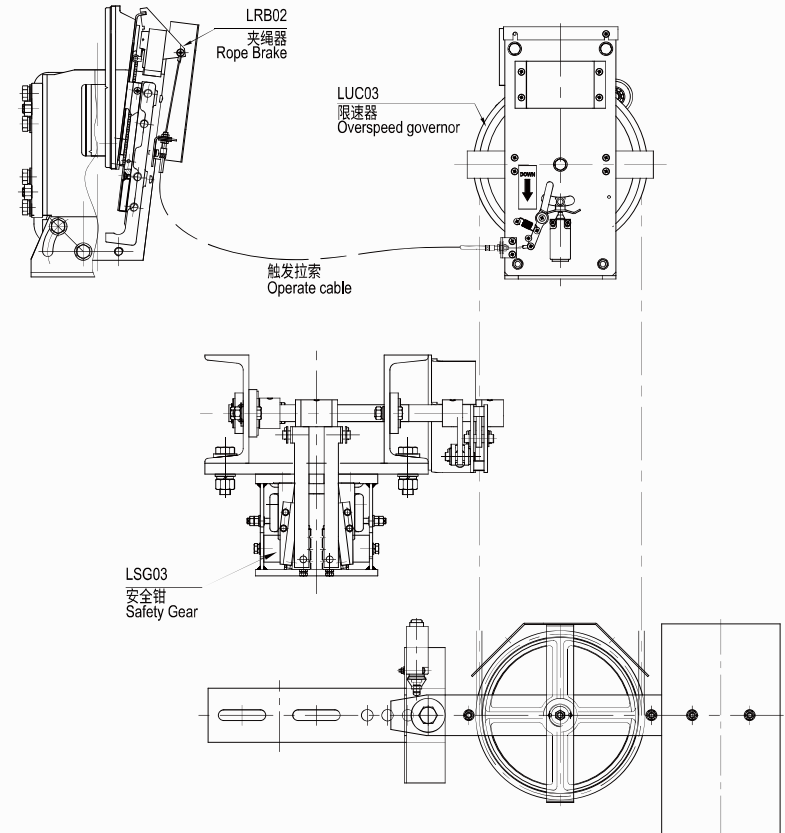


1. 触发方式: 机械触发 (标配3.5m拉索, 选配5m拉索); 电气触发 (配电源盒)。
2. 适用钢丝绳直径: $\phi 8\text{mm}-\phi 16\text{mm}$ 。
3. 当用于其他曳引悬挂比时系统质量、电梯额定载重量和额定速度的适用范围为:
 实际系统质量适用范围=型式试验系统质量范围 \times 实际曳引比 \div 型式试验曳引比;
 实际额定载重适用范围=型式试验额定载重范围 \times 实际曳引比 \div 型式试验曳引比;
 实际额定速度适用范围=型式试验额定速度范围 \div 实际曳引比 \times 型式试验曳引比。

1. Triggered mode: Mechanical trigger (Standard configuration with 3.5 m Operating cable /Optional 5m Operating cable); Electric triggered (standard configuration power supply box).
2. Rope dia: $\phi 8\text{mm}-\phi 16\text{mm}$.
3. For different traction ratio /the expected permissible mass of system / rated load and Rated Speed as follows:
 Range of actual using system mass=range of Type testing system mass \times using traction ratio \div type testing traction ratio;
 Range of using rated load= range of Type testing rated load \times using traction ratio \div type testing traction ratio;
 Range of using Rated Speed= range of Type testing Rated Speed range \times using traction ratio \div type testing traction ratio.

序号 No.	安装方式 Installation Type	宽度 Width	曳引比 Suspension Ratio	额定载重 Rated Load (kg)	系统质量 System Mass (kg)	A	B	C	D	D1
A01	正装 Normal	标准宽 Standard	2:1	600 ~ 3200	1600 ~ 11260	240	208	≤ 122	89	65.5
A02	倒装 Overhead	标准宽 Standard	2:1	600 ~ 3200	1600 ~ 11260	240	208	≤ 122	120	81
A03	正装 Normal	加宽 Extra Width	2:1	1260 ~ 6500	3354 ~ 16520	286	254	≤ 166	89	65.5
A04	倒装 Overhead	加宽 Extra Width	2:1	1260 ~ 6500	3354 ~ 16520	286	254	≤ 166	120	81
A05	正装 Normal	特宽 Max. Width	2:1	1260 ~ 6500	3354 ~ 16520	311	279	≤ 191	89	65.5
A06	倒装 Overhead	特宽 Max. Width	2:1	1260 ~ 6500	3354 ~ 16520	311	279	≤ 191	120	81

制停子系统
BRAKE SUBSYSTEM
UCMP



轿厢意外移动保护装置由如下组成:
 轿厢上行制停子系统: LRB02 夹绳器+LUC03限速器;
 轿厢下行制停子系统: LSG03 渐进式安全钳或瞬时安全钳+LUC03限速器。

UCMP consists of the following:
 Car upward braking subsystem: LRB02+ LUC03;
 Car downward braking subsystem: LSG03 or instantaneous safety gear+ LUC03.

制停系统 Braking System	LUC03限速器+LRB02夹绳器 LUC03+LRB02	上行超速保护, 轿厢意外移动保护 Upward Overspeed Protection, UCMP
	LUC03限速器+LSG03渐进式安全钳或瞬时安全钳 LUC03+ LSG03 or Instantaneous Safety Gear	下行超速保护, 轿厢意外移动保护 Downward Overspeed Protection, UCMP



样本册数据与配置仅供参考, 以各产品图纸或型式试验报告为准。因技术进步、产品改进等原因, 样本内容可能会不加通告地发生变更, 最终解释权归上海乐天电梯部件有限公司/乐天电梯部件(浙江)有限公司所有。

Data and configurations in this catalog are for reference only. The product drawings or type test certificates shall prevail. Due to technological advances, product improvements, or other reasons, the catalog content may be subject to change without notice. Shanghai Liftech Elevator Accessories Co., Ltd. / Liftech Elevator Accessories (Zhejiang) Co., Ltd. reserves the right of final interpretation.

SAFETY FIRST